

Program & Facilities Guide

Spring-Summer 2024



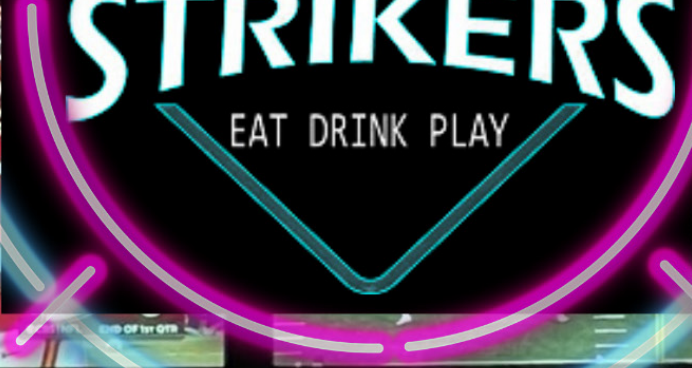
JC PARKS



EST. 2022

STRIKERS

EAT DRINK PLAY



ENTERTAIN BEYOND THE LANES

ALL SUMMER LONG!



2017 Christy Drive
Jefferson City, MO



(573) 644-1006

Table of Contents

Ways to Register	4
About Us	5
Special Events	6-10
Arts	11
Special Populations	12
The LINC	13-15
Oak Hills Golf Center	16-17
Adult Sports	18
Youth Sports	19-21
Summer Camps	22-27
Aquatics	28-33
Washington Park Ice Arena	34-37
Parks	38-40
Outdoor Recreation	41-42

JC Parks

City of Jefferson
Department of Parks, Recreation & Forestry
1299 Lafayette Street
Jefferson City, MO 65101

(573) 634-6482
www.JCParks.com
jcparks@jeffersoncitymo.gov

Mission Statement

The mission of JC Parks is to strengthen our community through quality parks, facilities, and programs. We strive to provide opportunities that create value and inspire physical and mental well being.



How to Reach Us

Administrative Office at The Linc	(573) 634-6482
CRMU Amphitheater	(573) 634-6527
Memorial Park Family Aquatic Center	(573) 634-6588
Ellis-Porter Riverside Pool	(573) 634-6585
Oak Hills Golf Center	(573) 634-6532
Washington Park Ice Arena	(573) 634-6580
Parks Management Center	(573) 634-6592
Website	www.JCParks.com
Email	jcparks@jeffersoncitymo.gov

JC Parks Commission

The Commission is charged with acquisition, management, preservation, and improvement of a quality system of parklands, open space and recreation facilities and the development and supervision of programming of quality educational and recreational activities for all ages.

Commission Members:

Chris Duren	Mary Schantz
Alicia Edwards	Roger Schwartz
Stu Murphy	Pat Thomas
Erica Choinka	

President - Chris Leuckel

Vice-President - Andre Grinston

If you would like to serve on the Commission, please complete a volunteer profile form and submit to the Mayor. The form is available at City Hall or online at www.jeffersoncitymo.gov.

The Parks and Recreation Commission meets the second Tuesday of each month at 4:30pm.

On the Cover

Oak Hills Golf Center is an 18-hole, public golf course in Jefferson City that provides exciting challenges for experienced golfers, but open greens that are friendly to beginners. Many organizations in Mid-Missouri choose Oak Hills as a host for their fundraiser scrambles and tournaments.

This photo is from the 2019 Foundation for the Benefit of Helias Catholic High School. Thanks to Kris Wilson with the Foundation for the photo!

4

WAYS TO REGISTER

Refund Policy

Program cancellations may be made Mon - Fri, 8am-5pm, by calling (573) 634-6482 or in person at 1299 Lafayette Street. The Parks and Recreation Commission has adopted the following refund policy regarding programs and facilities:

Programs

1. If a cancellation is made prior to the registration deadline, a refund will be given, less a processing fee: \$10 for program fees up to \$99; \$20 for program fees \$100 & over.
2. If a cancellation is made after the registration deadline, a credit for future programs/reservations will be given for 1/2 of the fee paid. Once a program starts no refund/credit will be given unless a medical statement substantiates the injury or illness.
3. Fees paid for team registrations are not refundable once a team registration has been accepted and recorded except as in #6 below.
4. No credits, refunds, or make-up classes will be issued for programs missed due to personal reasons.
5. A refund or credit will be granted when medical illnesses/injuries are substantiated by a medical note.
6. Full refunds are made if a program is canceled by JC Parks.

Camps

1. A \$25 processing fee will be charged per week, per child for every refund issued.
3. All camp refunds must be requested two weeks prior to the first day of the program.
4. If a cancellation is made after the registration deadline, a refund will be given for 1/2 of the fee paid.
5. Once a program starts, no refund will be given unless a medical statement substantiates the injury/illness.
6. Camp transfers need to be approved by the Program Manager, Angie Toebben. Requests need to be sent directly to atoebben@jeffersoncitymo.gov

Facilities/Hayrides

1. Fees paid for admission to park facilities are not refundable.
2. The holding fee required to reserve park facilities/shelters is not refundable under any circumstance except as in #5 below.
3. If a cancellation occurs ten or more business days prior to the scheduled reservation, the facility/hayride rental fee and deposit is refundable, less a \$10 processing fee.
4. If a cancellation occurs less than ten business days prior to the reservation, 1/2 of the rental fee and the entire damage deposit will be refunded.
5. Full refunds are made if a rental is canceled by JC Parks.

Pool Rentals/Birthday Parties

1. Weather cancellations are at the discretion of JC Parks Aquatics staff.
2. Reservation fees for pools are not refundable under any circumstance except as in #4 below.
3. Transfer of rental date must be requested two weeks prior to reservation date.
4. Full refunds are made if a rental is canceled by JC Parks.

Amusement Park Tickets

All amusement park ticket sales are final. Refunds are not issued for amusement park tickets.

Payment methods accepted include cash, checks, money orders, MasterCard, VISA, and Discover.

On a credit card registration, please include the card number, expiration date, security code, printed name as it appears on the card, and your signature.

Make all checks payable to JC Parks.

Walk In

JC Parks is located at The Linc, 1299 Lafayette Street.

Office hours coordinate with operating hours at The Linc. Visit JCParks.com for details.

Mail

Mail the registration form and payment to 1299 Lafayette Street, Jefferson City, MO 65101. Please do not mail cash.

Phone

Phone in your registration to (573) 634-6482. MasterCard, VISA, and Discover are accepted.

To help expedite the registration process, please have all necessary registration information readily available.

Online

You can register for activities online at JCParks.com.

You may create an account online if you are a new customer. If you are an established customer but don't know your login information, your username and password reset request can be emailed to you if you have an email address on file.

LIABILITY

JC Parks and/or the Jefferson City Parks and Recreation Commission does not provide insurance coverage for injuries suffered while participating in programs or using facilities.

Any costs related to such injuries should be presented to your personal medical insurance carrier.

LATE FEE POLICY

Many parks and recreation programs have enrollment limits and registration deadlines. To ensure a spot in your favorite activity, please be sure to register before the registration deadline. Registering early will allow for proper staffing levels and adequate equipment and program supplies for all participants and may save you money.

If space is still available in a program after the registration deadline, the program fees will be higher.

Staff

Learn more about who we are and meet our team at jcparks.com/about or scan the QR code below:



Scholarships

The Parks and Recreation Commission believes that no youth should be denied access to Parks and Recreation programs for financial reasons.

The Parks and Recreation Foundation makes recreation scholarships available to those who otherwise would not be able to afford to participate in organized recreation activities. Those seeking scholarships will be asked to complete a Recreation Scholarship Application Form available through JC Parks. Scholarships are generally limited to those receiving benefits from public assistance as designated on the application form. Scholarship funding is limited to \$200 per individual per calendar year and is restricted to ongoing programs conducted by JC Parks staff. Specialized programs of short duration conducted by non-staff members (e.g. baseball clinics) are ineligible for scholarship funding.

All application forms requesting funding for youth programs must be signed by the parent/guardian of the prospective participant. Participants/parents must pay a minimum of 20% of the registration fee for programs for which scholarship assistance is requested.

Work with us!

Job opportunities await you...just outside your door! JC Parks has begun accepting employment applications for 2024 seasonal positions. Competitive wages, flexible hours, and great job experience are just a few reasons why we've got it going on.



To apply for these jobs, please visit the City of Jefferson's website.

JC Parks & Recreation Foundation

The Jefferson City Parks and Recreation Foundation strives to provide additional resources to leverage taxes, fees and grants to enhance our parks and recreation services.

Over the years, civic-minded individuals and organizations have maintained a tradition of enhancing the quality of life for their families, friends, and neighbors through generous donations to the Jefferson City Parks and Recreation system. In 1992, the Jefferson City Parks and Recreation Foundation was formed to provide continuing leadership and foster the expansion of parks and recreation services in Jefferson City.

The Foundation's goal is to emphasize the value of parks and recreation - both passive and active - not only for individual growth and development, but also for a strong family unit and for making our community a more desirable place to live, work, play and visit.

A donation to the Parks Foundation contributes to the entire community.

Any and all size gift to our community is appreciated and contribute to the livability and quality of life in Jefferson City.

Donate to the Parks Foundation below:





**THURSDAY
night live**
DOWNTOWN JEFFERSON CITY

Join us for the 2024 season!

MAY 16 **JUNE 20**
JULY 18 **AUGUST 15**

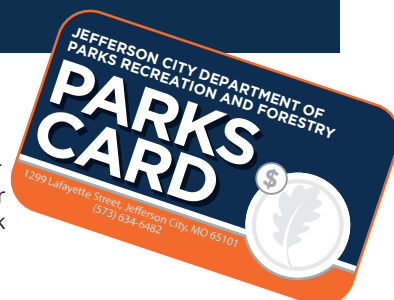
TOC District/Downtown Jefferson City
\$5 admission 13 and older
\$2 admission 4-12 years
Includes wristbands and cups for over 21 attendees.
Tickets available at the gate.

Thank you to our sponsors!
Central Bank, Rusty Drawing, N.H. Scheppers
Distributing, Hawthorn Bank, JC Parks and
Recreation, Zimmer Radio Group/Kat Country
94.3 and KRGG TV-13

downtown
JEFFERSON • CITY

Parks Card

JC Parks Cards can be purchased for any amount and can be used for any parks and recreation good or service. They are available for purchase at The Linc and Oak Hills Golf Center.



Family

Easter Egg Hunt

3/30/24 Saturday 11:00am @ Memorial Park

Fee: \$1 per child

Jefferson City Jaycees and JC Parks will host the 37th annual Easter Egg Hunt for children up to 9 years old. Participants will be divided into age groups and the park will be divided into four sections. Proceeds go to benefit local community projects.

Giving Tree Earth Day Celebration

4/21/24 Sunday 11:00am - 3:00pm @ Memorial Park

Fee: Free

Inspired by the famous pull-at-your-heartstrings book by Shel Silverstein, the Giving Tree Earth Day celebration will include kids' crafts, seed plantings, and Earth Day education.



Dog Days at the Diamonds

4/25/24 Thursday 5:00-7:00pm @ 12143 Renz Farm Rd.

Fee: \$5 per person

Get ready to raise the 'woof,' at Dog Days at the Diamonds. Bring your furry friends to the 63 Diamonds Ballfield Complex for a fun-time filled with live music, vendors, food trucks, games, and more! There are off-leash opportunities inside the ballfields for the pups to play.



Stars Under the Stars

Missouri State Capitol Grounds
 Friday 5/24/24 "A Dogs Way Home"
 Friday 6/28/24 "The Little Mermaid" (2023)
 Friday 8/2/24 "Jumanji" (1995)

Fee: Free - Sponsored by Healthy Blue



Enjoy your favorite movies on a giant inflatable screen under the stars. Bring lawn chairs and blankets. Movies start at dusk, approximately 8:45 pm.



KidsFest

6/1/24 Saturday 10:00am - 2:00pm @ Ellis-Porter Riverside Park

Fee: Free

Recognized as the 2021 Event of the Year by USTA, KidsFest features entertainment, games, education, and more. Sponsored by JC Parks, KRCG-TV, and Healthy Blue. Concessions and items available for purchase.

Interested in being a vendor? Contact Phil at (573) 634-6487 or pstiles@jeffersoncitymo.gov.

Kids Fishing Derby

6/8/24 Saturday 8:00am @ Binder Park Lake

Fee: Free

Sponsored by JC Parks, Elks Lodge, Capital City Fly Fishers, Capital Crappie Club, Mexico Bassmasters, and Merten's Bait and Tackle. Prizes and trophies will be awarded for smallest, largest, and most fish caught in the following age categories: 5 years and under, 6-9 years, 10-12 years, and 13-16 years.

7:00-8:00 am: tournament registration at Binder Lake Deck
 8:00-9:00 am: Capital Crappie Club fishing derby
 9:00-10:00 am: casting contest
 Awards ceremony following casting contest

Juneteenth Heritage Celebration

6/15/2024, 10:00am - 5:00pm @ Community Park

Fee: Free

Celebrate this day of freedom at Community Park with food, vendors, entertainment, and more!
 For more details, visit juneteenthjcmo.org



Father's Day Special

6/16/24 Sunday 10:00am - 7:00pm @ MPFAC and Riverside Pool

Fee: Free with paid youth admission

Dads swim for free on Father's Day!



Teddy Bear Picnic

7/10/2024 Wednesday 9:00 - 11:00am @ McClung Park

Fee: Free

Join us to celebrate Teddy Bear Picnic Day at McClung Park outdoor pavilion! Kids are encouraged to bring their favorite stuffed animal to join them in this morning of fun. There will be crafts, games, story time, refreshments, music, a teddy bear clinic, and lots of fun!

Aquatics

Moana and Mermaids Pool Party

6/14/24 Friday 6:00 - 7:30pm @ Ellis-Porter Riverside Pool

Fee: \$10 per child

You're invited to join us for a Maui-sized good time! An adventure full of shiny crafts, snacks, and of course swimming is waiting just for you. Pre-registration required. Available for children ages 2 -10 years. No charge for guardians, who are required to stay for entire event.

Activity #: 603171-01

Float Your Boat

8/3/24 Saturday 5:30 - 7:00pm @ Ellis-Porter Riverside Pool

Fee: \$20 per boat

Whether you sink or float, you are guaranteed to have a blast. Teams consisting of 2-6 participants design and build a human-powered boat made strictly of cardboard and duct tape that is capable of completing a 50-meter course. All pre-registered captains and their boats must check in at Riverside Pool by 5:00 pm on race day.

Activity #: 603171-03

Hot Dippity Dog Swim

8/11/24 Sunday 6:00 - 7:00pm MPFAC

Fee: \$5 per dog

Enjoy the dog days of summer by taking a dip with your canine. All dogs need to be on a leash. Leash may be removed when in the water, but owners must stay close to their dogs. When leaving the event, be sure to pick up your PupCup custard from the concessions stand! We encourage everyone to not swim underwater.



Sports / Race Events

The Great Escape Triathlon - Kids/Youth

6/8/24 Saturday 7:00pm @ Ellis-Porter Riverside Park

Fee: Varies by race and registration date

We have added the thrill of triathlons for the entire family with the Great Escape Kids and Youth Triathlon. This family event kicks off the weekend of races. Swim at Ellis-Porter Pool, run, and bike around the park for this exciting challenge. The kids division is for ages 5-8 and youth is for ages 9-12.

Visit www.jcmotri.com for more information and registration.



The Great Escape Triathlon - Adult

6/9/24 Sunday 7:00am @ Ellis-Porter Riverside Park

Fee: Varies by race and registration date

This is a well-organized, but relaxed, event for first time triathletes ages 13 and up. Events include the classic 400-meter pool swim, 12-mile bike and 3.1-mile Sprint Triathlon. Don't like the water? We also have a duathlon for bikers and runners or team up to do our 2 or 3-person team relay. For those wanting a mini version of the sprint, we have the Super Sprint consisting of a 200-meter pool swim, 5.3-mile bike and 1.8-mile run.

Visit www.jcmotri.com for more information and registration.



Tour de Jeff City Moonlight Bike Ride

7/21/24 Sunday 2:00am @ Hy-Vee parking lot

Fee: Free

Sponsored by JC Parks and Red Wheel Bike Shop, the Tour is a non-competitive event for all ages. The route is carefully chosen to avoid most major hills. A map will be posted online at JCParks.com. Start and end at Hy-Vee.

Prison Break

8/24/24 Saturday 8:00am @ MO State Penitentiary

Fee: \$40

Racers ages 18+ will emerge from the prison's dungeon, sprint through Housing Unit 4 and set out on a 5+ mile course that will test every facet of their athleticism.

Expect the unexpected – hilly terrain combined with a slew of obstacles will be featured at every turn.

Register at visitjeffersoncity.com/prison-break.



Catch Me If You Can

8/24/24 Saturday 9:40am @ Ellis-Porter Riverside Park

Fee: \$30 early bird; \$40 regular

Youth ages 6-17 will make their way through trails and obstacles. Obstacles include water and mud, so be prepared to get messy! Adults may participate with their children for an additional \$10 fee.

Registration required. Day of registration at event is cash only.

Start Time	Activity #	Early Bird	Regular
9:40 am	908171-00	June 1 - Aug 11	Aug 12 - 24
10:00 am	908171-00.01	June 1 - Aug 11	Aug 12 - 24
10:20 am	908171-02	June 1 - Aug 11	Aug 12 - 24

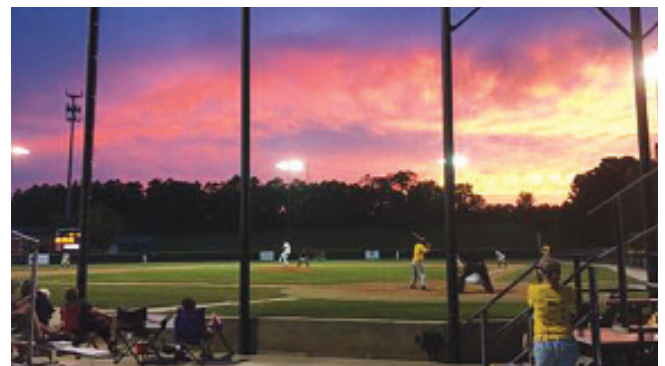


Renegades Baseball

Vivion Field @ Washington Park

The Renegades are Jefferson City's premier collegiate baseball team. Check out all the action on the Renegades home field at beautiful Ernie Vivion Field in Washington Park.

For more information on the Renegades home schedule and events, visit www.jeffcityrenegades.com



Ice Arena

Spring Ice Skating Recital

3/15/24 Friday 7:00pm @ Washington Park Ice Arena

Fee: \$1 Admission

Visit Washington Park Ice Arena for an evening of entertainment. Participants will include skaters of all ages and ability levels. Rec and competitive Capital Classics teams will also perform their programs.

Sign up at the front desk to participate in any of the recitals.

ISI District 8/9 Championships

3/22/24 - 3/24/24 8:00am-8:00pm @ Washington Park Ice Arena

Endorsed by and in accordance with Ice Sports Industry, this is an amateur figure skating and general skating skills competition. Skaters from Kansas, Missouri, and Illinois compete in a variety of events individually and in teams like synchronized skating and production numbers. Registration on Entryeeze.

Contact Carly Potts for details at cpotts@jeffersoncitymo.gov



62nd Annual Ice Show: Curtain Up!

4/12/24, Friday 7:00pm @ Washington Park Ice Arena
4/13/24, Saturday 7:00pm @ Washington Park Ice Arena
4/14/24, Sunday 2:00pm @ Washington Park Ice Arena

Fee: \$12 - Presale (March 12 - April 11)
\$14 - Day of Show (April 12 - 14)
(Kids 5 and younger are free)

Don't miss the longest running amateur ice show in Missouri! Performances include spotlights and group numbers given by participants of JC Parks lesson programs and Missouri Figure Skating Club adaptive program.

Cultural Arts & Entertainment

Porchfest JCMO

5/5/24 Sunday 1:00 - 4:00pm @ Fairmount Blvd

Fee: Free Admission

Fees apply to concessions and merchandise.

Have you ever sat on your porch and enjoyed hearing a neighbor strumming a guitar on a nearby porch? Porchfest takes this idea and multiplies it to create a free, family-friendly event where the community can share their love of playing and listening to music by holding porch concerts in different neighborhoods. The festival is centered around local music, art, and neighborly hospitality. There will be a wide range of diverse musical styles participating.



Are you interested in being a vendor or performing on one of the porches? Contact Leann at lporello@jeffersoncitymo.gov

JCMO Art Around Town

6/13/24 Thursday 4:00 - 8:00pm @ Various Locations

Fee: Free

A free evening of artwork displayed at different locations around Jefferson City. Guests can start at any location and enjoy various art mediums. A map will be available for pick-up prior to the event at all participating locations.



Capital Arts Gallery Summer Camps

Capital Arts is hosting two summer art camps in 2024. Let their creativity run wild! Young artists will learn a variety of art forms and explore a wide range of mediums.

Program Title:	Art Explorers
Dates:	June 17 - 21 or August 5 - 9
Time:	9:00am - 12:30pm
Fee:	\$125
Ages:	8-12 years old

For details and to register, visit capitalarts.org or call (573) 635-8355



For more information on arts and entertainment in Jefferson City, visit VisitJeffersonCity.com or scan QR Code below:



JCMO Arts Jefferson City Cultural Arts Commission

We at the City of Jefferson Cultural Arts Commission heart art.

Like, all of it. Visual, music, literary, performance...bring it on. These various forms of artistic expression come together to portray our little big town's unique cultural identity.

The City of Jefferson Cultural Art Commission exists to promote, collaborate, and educate our residents and visitors on local art efforts and opportunities.

And what better way to promote, collaborate, and educate than with a website that is all that and a bag of paint chips...

Introducing JCMOArts.com!

Looking to explore local art? Check out the **public art map** and discover dozens of public art pieces throughout town.

Want to paint the town pretty? Find everything you need to know about the **public mural application process**.

Searching for your next experience? Find your fun with featured **art events and entertainment**.



Stars Night Out

Stars Night Out is a year round recreation program sponsored by Day Solutions Foundation for Cole County and adjacent county residents with mental and/or physical disabilities who are 15 years of age or older.

The program includes social, physical, and creative activities to fill the leisure needs of our participants. Dances, game nights, dinners, hayrides, bingo, movies, and nature activities are some of the events we offer.

Anyone wanting to participate must register before attending activities. Pre-registration consists of filling out the registration form and returning it to the JC Parks office. This form includes a parent/guardian release, a brief medical history, and emergency contact information.

Participants may register at The Linc, 1299 Lafayette St.

Participation is free thanks to the generosity of Day Solutions Foundation.

JC Parks Stars

JC Parks Stars is a year round sports training program for any Jefferson City resident eight years of age and older having disabilities because of cognitive delays. Participation in Special Olympics Missouri games provides people with disabilities the opportunity to develop physical fitness, to gain self-confidence, build a more positive self-image and to form friendships with other Special Olympians.

Participants may register for one or more of the sports offered. Signing up consists of completing a form designating the sports in which you would like to participate, a SOMO medical information form and release form. Transportation and participation fees may apply.

Visit jcparks.com/program/jc-parks-stars/ for details.



Miracle League

JC Parks offers a non-competitive baseball league for area school-aged kids with physical and developmental disabilities or other conditions that keep them from participating in other baseball leagues. Every kid bats, fields, and has a "baseball buddy" to help them. The league is designed to help every kid, regardless of age or ability, be successful and have fun!

The program includes six games and a uniform shirt and hat. Registration forms are available at The Linc or at JCParks.com.

Program Dates	Day	Time	Activity #	Early	Reg
Mar 22 - Apr 26	Fri	6:30 pm	501391-00	\$45	\$50



**JC Parks Special Populations
is on Facebook!**

facebook.com/groups/JCParksSPOPS

Welcome to



1299 Lafayette Street Jefferson City, MO 65101
(573) 634-6482 • jcparks.com/facility/the-linc/

Operating Hours

August 1 - May 15

Monday - Thursday	5:00am - 10:00pm
Friday	5:00am - 9:00pm
Saturday	7:00am - 6:00pm
Sunday	8:00am - 10:00pm

May 16 - July 31

Monday - Thursday	5:00am - 10:00pm
Friday	5:00am - 8:00pm
Saturday	7:00am - 4:00pm
Sunday	8:00am - 5:00pm

Membership Rates

	Daily Drop-In	Monthly*/Annual
Adult (18-59)	\$9	\$27/\$297
Youth	\$7	\$22/\$242
Family (Immediate family in household)	\$17	\$33/\$363
Senior (60+)	\$6	\$22/\$242
Senior Couple	\$9	\$31/\$341

*Monthly rate increases \$15 for members without bank draft.

Facility Highlights

- Four regulation basketball courts/six volleyball courts
- Elevated walking track (7.5 laps = 1 mile)
- Four exercise/meeting rooms
- Power cycle room
- Kickboxing room
- Fitness center powered by Technogym

Visit us to discover how The Linc can help you achieve your health and wellness goals!

Stay in-the-know on holiday hours, special pop-up exercise classes, and more at facebook.com/TheLincJCMO.

Corporate Memberships

Want to implement a corporate membership plan for your business?

Contact Membership Director Luke Shelangoski at (573) 403-7813 or lsheLANGOSKI@jeffersoncitymo.gov to customize a plan that best fits your organization's needs.



Track your progress at The Linc app.





Senior Membership Options

	Daily	Monthly	Annual
Senior (60+)	\$6	\$22	\$242
Senior Couple	\$9	\$31	\$341

The Linc is a proud member of SilverSneakers and Renew Active!

SilverSneakers® is a health and fitness program designed for adults 65+ that is included with many Medicare Advantage plans. SilverSneakers encourages older adults to participate in physical activities that will help them to maintain greater control of their health. Check your eligibility at silversneakers.com.

Renew Active is a program available for members of an eligible Medicare Advantage plan insured by UnitedHealthcare Insurance Company or one of its affiliate companies in participating states.

Along with access to the fitness center, walking track, and exercise classes, senior memberships include the Active Living program.

Twalkers

Join the Twalkers to meet friends, exercise, and socialize! The Twalkers are a group that meets multiple times every week to get together, walk, and talk!

Location: The Linc, 1299 Lafayette St.
Meeting Days: Monday, Wednesday, and Friday
Time: 8:30-9:30am



Active Living Program

The active living program is designed to provide our citizens of seniority an opportunity to improve their wellness and socialize with others. Bingo, volunteer outings, skills classes, crafts, and more! Ask the front desk at the Linc for sign-ups!

Active Living Fitness

Aqua Motion

This water aerobics group exercise class incorporates gentle stretching and balance exercises, assisted by the support of the water. This low-medium intensity shallow end class can be adapted for participants at all levels. Must be 16+

Participants who are not Linc members must pay the \$9 drop-in fee at the Ellis-Porter Riverside Pool admissions counter before class.

Location: Ellis-Porter Riverside Pool
Lesson Days: Monday - Friday
Time: 7:45 - 8:45 am

Dates	Linc Member	Non-Member
May 28 - Aug 30	Free	\$9 Daily Drop-In



Simple Circuit

Offers standing, low-impact choreography alternated with standing upper-body strength with hand-held weights, elastic tubing with handles and a ball. A chair is available for standing support. *SilverSneaker endorsed.*

Chair Yoga

Chair support is offered to safely perform a variety of postures designed to increase flexibility, balance and range of movement. *SilverSneaker endorsed.*

Tai Chi for Arthritis

Chair support is offered to safely perform a variety of postures designed to increase flexibility, balance and range of movement. *SilverSneaker endorsed.*

Exercise Classes @ The Linc

The Linc has exercise classes for all ages and abilities. Visit JCParks.com for a complete list and class calendar. Non-member drop-in fee is \$9 when participating in exercise classes.



Outdoor Fitness Court

New in 2023! JC Parks added an outdoor fitness court near the Linc to provide opportunities for outdoor functional fitness training. Open to the public and conveniently located off the greenway, this fitness court is an all-in-one station for individual and group fitness. Equipment by MoveStrong.

Weekend Pop-Up Classes

Check our Facebook page for announcements on our weekend pop-up class times and descriptions!

Personal Training

\$99 Special Introductory Rate
4 • 30 Minute Sessions

Individual Rates

\$45/Session
Up to 9 • 1hr Sessions

\$40/Session
10+ • 1hr Sessions

Partner Rates

\$35/Session
Up to 9 • 1hr Sessions

\$30/Session
10+ • 1hr Sessions

50/50

Raise your heart rate with 50% cycling and 50% weight training. Includes plyometrics, agility, and intervals.

Full Body Force

This class forces your whole body to be the power during your workout with strength and cardio moves that build muscle and endurance. Get ready for your fitness to be fired up!

Freestyle 45

This class is designed to challenge and empower the way you think about sculpting your body. Varied workouts will increase core strength, conditioning, and building lean muscle.

HIIT IT

Fast paced metabolic conditioning class with high intensity cardio intervals using muscle defining moves.

Hip Hop Step

This aerobics class focuses on choreographed cardio conditioning with movements using a step and light weights.

Kick-IIT

Exciting combo of kickboxing and H.I.I.T for a high energy workout. Focused around kickboxing bags, but includes various equipment and weights for new challenges. Gloves required.

Muscle Max

High impact cardio and strength intervals will keep your heart pounding as we move through all of the major muscle groups.

Muscle Max Out

This strength training class utilizes compound exercises that target multiple muscle groups for a higher calorie burn and ultimate muscle stimulation.

Power Cycle

This class is a great cardiovascular workout. Pedal through hill climbs, sprints, while incorporating some strength and resistance training too! This is a total body workout. All levels are welcome.

Power Strike

A mix of boxing and martial arts that will teach you the basics of proper form that maximize power. So much fun that you won't realize you're making gains.

TGIF Cardio

TGIF Cardio is an energetic class that will have your blood pumping and heart rate up through a variety of high and low impact aerobics exercises using body weight and light resistance.

Yoga/Pilates

Combines various poses used in yoga and pilates. This class will strengthen your mind, body, and spirit.

Operating Schedule

Oak Hills Golf Center is open daily year round, providing the temperature is at least 40 degrees, and there is no frost on the greens or frozen turf conditions.

The driving range is open when the course is open, with the exception of Monday mornings during the summer for mowing purposes. If you are uncertain about course conditions, call the clubhouse at (573) 634-6532.

Opening Times

March - October	7:30am
November - February	9:30am

Golf Course closes at sunset daily.

Wednesday Ladies League

Join the open ladies league on Wednesday mornings May 1, 2024 through September 25, 2024. Formats and pairings change weekly.

To register: contact the clubhouse at (573) 634-6532 or arrive Wednesday morning by 8:00am.

Thursday Night Open League

A two-person scramble open league is offered May 2, 2024 through September 26, 2024. Arrive 15 to 30 minutes prior to the 5:30 pm shotgun start.

To register: pre-registration opens the Monday prior to each league night. Contact the clubhouse at (573) 634-6532 to reserve your spot. Limited to 54 teams, and we reach max count often!

Non-Golf Activities

Non-golf activity is not permissible on the golf course throughout the year, regardless of the course's operating schedule. This includes, but is not limited to, walking, dog walking, running, biking, or looking for golf balls.

Winter sport activities are also not permissible due to the potential of damaging the turf. Winter activities include, but are not limited to, sledding, cross-country skiing, or snowshoeing.

Visit JCParks.com for additional policies at Oak Hills Golf Center.

Daily Green Fees

Weekday Rates M-Th (March - October)	\$27	\$20
Weekend Rates F-Su (March - October)	\$29	\$22
Senior Rates (60 Years & Older)	\$20	\$15
Junior Rates (17 Years & Under)	\$20	\$15
Twilight	\$20	\$15
Carts (per seat)	\$22	\$14

Driving Range

Small Bucket	20-25	\$5
Medium Bucket	40-45	\$7
Large Bucket	70-75	\$8
Extra Large Bucket	100-105	\$9
Family Bucket	140-150	\$12

Annual Passes

Adult	18 to 59 Years Old	\$875
	Cart Pass	\$450
	Total	\$1,325
Senior	60 and Over	\$825
	Cart Pass	\$450
	Total	\$1,275
Junior	17 Years and Under	\$200
	Cart Pass (16 and Up)	\$450
	Total	\$650
Family	Additional members	\$300





Junior Golf Camp

This is an introductory golf instruction program, teaching basic swing fundamentals, putting, chipping, and bunker play. Golf rules and etiquette will also be taught. Campers will play golf every day. Clubs are available on first-come-first-served basis.

Camp Times: 8:00 - 11:00 am

Location: Oak Hills Golf Center

Registration Deadline: one week prior to camp start date

Dates	Age	Activity #	Fee	Late
June 3 - 7	8-10	601181-1A	\$120	\$130
June 10 - 14	11-14	601181-2A	\$120	\$130
June 17 - 21	8-10	601181-3A	\$120	\$130
June 24 - 28	11-14	601181-4A	\$120	\$130
July 8 - 12	8-10	601181-5A	\$120	\$130
July 15 - 19	11-14	601181-6A	\$120	\$130

Competitive Golf Clinic

The competitive clinic helps young golfers take their game to the next level. Clinic consists of one hour of instruction, followed by two hours of on-course experience daily, with a nine-hole tournament on the final day.

Camp Times: 12:30 - 3:30 pm

Location: Oak Hills Golf Center

Registration Deadline: one week prior to clinic start date

Dates	Age	Activity #	Fee	Late
June 10 - 14	12-15	601182-01	\$120	\$130
June 24 - 28	12-15	601182-02	\$120	\$130
July 8 - 12	12-15	601182-03	\$120	\$130

Beginning Adult Golf Lessons

These lessons are designed for those new to golf as well as those who want to become a more avid golfer. Adult golf lessons are for ages 16 years or older.

Each session consists of six, one-hour weekly lessons emphasizing fundamentals of grip, alignment, stance, course rules and etiquette, and basic golf mechanics.

Participants should provide their own clubs. Some clubs are available on a first-come-first-served basis.

Location: Oak Hills Golf Center

Registration Deadline: one week prior to lesson start date

Day	Dates	Time	Activity #	Fee	Late
Mon	May 6 - June 17	5:30-6:30pm	902181-01	\$90	\$100
Wed	May 8 - June 12	6:45-7:45pm	902181-02	\$90	\$100
Mon	Aug 5 - Sep 16	6:45-7:45pm	902181-03	\$90	\$100
Wed	Aug 7 - Sep 11	5:30-6:30pm	902181-04	\$90	\$100

Intermediate Adult Golf Lessons

Are you comfortable playing on the course but want to improve?

Intermediate lessons consist of more one-on-one time with the instructor, improving ball striking skills, shot shaping, and a variety of short game styles. Each session consists of six, one-hour weekly lessons.

Participants should provide their own clubs. Some clubs are available on a first-come-first-served basis.

Location: Oak Hills Golf Center

Registration Deadline: one week prior to lesson start date

Day	Dates	Time	Activity #	Fee	Late
Mon	May 6 - June 17	6:45-7:45pm	902182-01	\$90	\$100
Wed	May 8 - June 12	5:30-6:30pm	902182-02	\$90	\$100
Mon	Aug 5 - Sep 16	5:30-6:30pm	902182-03	\$90	\$100
Wed	Aug 7 - Sep 11	6:45-7:45pm	902182-04	\$90	\$100



Pickleball Open Play

Open court time for pickleball players is available at The Linc (1299 Lafayette St.); Washington Park Tennis Courts (1015 Louisiana Ave.); and Yvonne Walker Hoard Tennis Courts (Lafayette St./Dunklin St. intersection).

All players must pay the daily drop-in fee or purchase a membership when playing at The Linc.

Contact Anthony at aweeks@jeffersoncitymo.gov or (573) 634-6524 if you are a new pickleball player and need access to the pickleball calendar and sign-up sheet.

Construction for Pickleball courts at Washington Park will be underway in 2024!

Stay tuned at jcparks.com for updates.



Horseshoes

Capital City Horseshoe Club offers leagues and tournaments at the Washington Park Horseshoe Complex. Leagues are six weeks.

Spring league Mondays @ 6:30pm beginning April 8
Summer league Tuesdays @ 6:30pm beginning May 21

For more information, call Mel Bruemmer at (573) 635-9394 or mlbruem@aol.com.

April 8: Spring singles league begins
April 27: Spring Has Sprung Classic
May 11: Ron Hassler Memorial Cancer Benefit
May 21: Summer singles league begins
June 29: Big Money Tournament
July 20: Jefferson City Open Singles Tournament
August 24: Hot August Tournament

Slow Pitch Softball

Location: Binder Sports Complex
Spring League Start: week of April 8
Summer League Start: week of May 20
Fall League Start: week of August 26

Players must be at least 18 years old. Game balls are provided before first game.

League	Games	Fee	Late	Registration
Spring Single	3	\$135	\$155	Jan 29 - March 8
Spring Double	6	\$270	\$290	Jan 29 - March 8
Summer Single	10	\$450	\$470	Feb 12 - April 12
Fall Single	6	\$270	\$290	July 1 - Aug 2
Fall Double	10	\$450	\$470	July 1 - Aug 2

Refer to page 19 for details about adult karate classes.

Adult Volleyball

Sand League Location: Binder Sports Complex
Indoor League Location: The Linc
Summer League Start: week of May 27
Fall League Start: week of August 26

Players must be at least 16 years old. Co-Ed and Women's divisions available. Leagues play Monday-Thursday evenings.

Summer	Games	Fee	Late	Registration
Sand 4's	10	\$160	\$180	March 18 - April 19
Sand 6's	10	\$160	\$180	March 18 - April 19
Indoor 6's	10	\$210	\$230	March 18 - April 19
Fall	Games	Fee	Late	Registration
Sand 4's	6	\$90	\$110	July 1 - Aug 2
Sand 6's	6	\$130	\$150	July 1 - Aug 2
Indoor 6's	10	\$210	\$230	July 1 - Aug 2

Co-Ed Aquatic Volleyball League

New in 2024! Co-ed aquatic volleyball Sunday night league at Ellis-Porter Riverside Pool.

Limited to 6 teams. Games start at 5:30pm.

More information at JCParks.com.

Karate

Karate is a martial art involving blocks, strikes, evasions, throws, and joint manipulations.

A karate gi can be purchased at a martial arts supply store or through the class instructor. Youth classes are for ages 4-10. The Youth class will offer a Little Dragons track for the youngest students.

All classes are held at the North Jefferson Multipurpose building.

Youth Class: Wednesdays 5:30 - 6:25pm

Regular Class: Wednesdays.6:30 - 7:25pm

Day	Dates	Activity #	Fee	Late
Wed	Feb 21 - Apr 3	907412	\$35	\$40
Wed	Apr 10 - May 22	907412	\$35	\$40



Start Smart Soccer

Skill Stations: kicking, dribbling, trapping, throw-ins, & agility
Ages: 3 - 5 years old and parent/guardian
Equipment: soft material soccer ball, official soccer ball (size 3), youth shin guards & four soccer cones
Kit: \$38 (orders due by February 28)
Location: to be determined
Registration: February 1 - 28

Day	Dates	Time	Activity #	Fee	Late
Wed	March 27 - May 8	5:30 pm	901121-01	\$25	\$30
Wed	March 27 - May 8	6:30 pm	901121-02	\$25	\$30

Start Smart Football

Skill Stations: throwing, catching, kicking/punting, running, agility, & flag pulling
Ages: 4-6 years old and parent/guardian
Equipment: mini football, flag belt, four cones, and a kicking tee
Kit: \$28 (orders due by August 1)
Location: to be determined
Registration: July 5 - August 1

Day	Dates	Time	Activity #	Fee	Late
Wed	Aug 28 - Oct 9	5:30 pm	901124-01	\$25	\$30
Wed	Aug 28 - Oct 9	6:30 pm	901124-02	\$25	\$30

Start Smart Golf

Skill Stations: putting, chipping, pitching and full shot
Ages: 5 - 7 years old and parent/guardian
Equipment Needed: all equipment will be provided during lessons - SNAG coaching system.

Location: Oak Hills Golf Center
Registration: Feb 1 - March 22
 (no class Memorial Day)

Day	Dates	Time	Activity #	Fee	Late
Mon	April 22 - June 3	5:30 pm	901122-01	\$55	\$60
Mon	April 22 - June 3	6:30 pm	901122-02	\$55	\$60



Start Smart Baseball

Skill Stations: throwing, catching, batting, running, & agility
Ages: 3-5 years old and parent/guardian
Equipment*: glove, koosh ball, foam or plastic bat, and foam or plastic ball
Kit: \$38 (orders due by May 1)
Location: to be determined
Registration: March 27 - May 1

Day	Dates	Time	Activity #	Fee	Late
Wed	May 29 - July 10	5:30 pm	901123-02	\$25	\$30
Wed	May 29 - July 10	6:30 pm	901123-03	\$25	\$30

Recreation Baseball

League consists of 12 regular season games (2 per week), Grade for 2024-25 school year.

Team Formation:	by school and buddy request
Games played:	12
Location:	Various
Early Bird Registration:	Jan 15 - 31
Regular Registration:	Feb 1 - 29
Practice Begins:	March 25
Play begins:	May 6

JC Parks provides team equipment and game balls. Coaches must register themselves at www.teamsideline.com/jeffersoncity

Fall '24 Grades	Nights*	Activity #	Early	Reg
4-5	Mon & Thu	601012	\$125	\$135
6-7	Mon & Thu	601014	\$125	\$135
8-9	Mon & Thu	601015	\$125	\$135



Tee-Ball & Coach-Pitch

Team Formation:	by school and buddy request
Games played:	6
Location:	Various
Game Times:	Start between 5:30 - 7:30pm
Early Bird Registration:	March 1 - 15
Regular Registration:	March 16 - 31
Play Begins:	May 20

Catchers gear and helmets are provided. Fee includes team shirt and hat (boys) or visor (girls). Volunteer coaches are needed.

Fall '24 Grade	Division	Night*	Activity #	Early	Reg
PreK	Boys Tee-Ball	Mon	601057	\$65	\$75
PreK	Girls Tee-Ball	Mon	601058	\$65	\$75
K	Boys Tee-Ball	Tue	601051	\$65	\$75
K	Girls Tee-Ball	Tue	601052	\$65	\$75
1	Boys Tee-Ball	Wed	601053	\$65	\$75
1	Girls Tee-Ball	Wed	601054	\$65	\$75
2-3	Girls Coach-Pitch	Thu	601055	\$65	\$75
2-3	Boys Coach-Pitch	Thu	601056	\$65	\$75

Competitive Baseball

Leagues Offered:	8u, 9u, 10u, 11u, 12u, 13u, 14u
Team Formation:	by coach
Divisions:	A and B
Location:	various
Game Nights:	Monday - Thursday

Coaches can visit teamsideline.com/jeffersoncity to register a team. Contact JC Parks at (573) 634-6482 to pay the full registration fee. Multi-team discounts available.

Season	Games	Start	Activity #	Registration	Fee
Spring	12 (6 DH's)	May 6	601010	EB: Jan 15 - 31 Reg: Feb 1 - 29	\$1,100 \$1,200
Fall	8 (4 DH's)	Aug 19	601000	EB: June 15 - 30 Reg: July 1 - 15	\$700 \$750

Recreation Softball

Team Formation:	by school and buddy request
Location:	Various
Early Bird Registration:	January 15 - 31
Regular Registration:	February 1 - 29
Play Begins:	May 6

Catchers gear, helmets, and game balls provided. Fee includes jersey and visor. Games are at 5:30 and 7:00pm.

Fall '24 Grade	Night*	Games	Activity #	Early	Reg
4-5	Mon	6	601032	\$75	\$85
6-8	Thu	6	601033	\$75	\$85

Competitive Softball

Leagues Offered:	8u, 10u, 12u, 14u
Team Formation:	by coach
Location:	Optimist Sports Complex
Game Nights:	Mon or Thur

Coaches can visit teamsideline.com/jeffersoncity to register a team. Contact JC Parks at (573) 634-6482 to pay the full registration fee. Multi-team discounts available.

Season	Games	Start	Activity#	Registration	Fee
Spring	12 (6 DH's)	May 6	601046	EB: Jan 15 - 31 Reg: Feb 1 - 29	\$900 \$950
Fall	8 (4 DH's)	Aug 19	601041	EB: June 15 - 30 Reg: July 1 - 15	\$650 \$700

**Game nights are subject to change*

Chiefs Flag Football

Rec Team Formation: by school and buddy request
Mod Team Formation: by head coach
Location: 63 Diamonds Sports Complex
Early Bird Registration: June 15 - 30
Regular Registration: July 1 - 15
Play Begins: August 19

Footballs are provided. Fee includes Chiefs reversible jersey, flagbelt, medal, and mouth guard.

Fall '24 Grade	Night*	Games	Activity #	Early	Reg
1 Rec	Mon	6	701061	\$85	\$95
2 Rec	Tues	6	701062	\$85	\$95
3 Rec	Wed	6	701063	\$85	\$95
4 Rec	Thur	6	701064	\$85	\$95
5-6 Rec	Thur	6	701067	\$85	\$95
3 Mod	Wed	6	701065	\$85	\$95
4 Mod	Thur	6	701066	\$85	\$95

*Game nights are subject to change



Summer Competitive Basketball

Grades Offered: entering 4th - 8th in fall 2024
Team Formation: by coach
Divisions: Boys A and B; Girls A and B
Location: The Linc
Games Played: 6
Game Nights: Mon - Thur
Play Begins: week of July 8
Early Bird Registration: May 15 - 31
Regular Registration: June 1 - 15

Coaches can visit teamsideline.com/jeffersoncity to register a team. Contact JC Parks at (573) 634-6482 to pay the full registration fee. Multi-team discounts available.

League	Games	Activity#	EB Fee	Reg Fee
Boys	6	806081	\$290	\$310
Girls	6	807081	\$290	\$310

High School Sand Volleyball

Location: Binder Sports Complex
League Start: May 26
Game Days: Sunday evenings

Players must be entering grades 9-12 in fall 2024. All leagues are co-ed.

League	Matches	Fee	Late	Registration
Sand 6v6	8	\$185	\$205	March 20 - April 14

Summer Recreation Volleyball

Team Formation: by school (indoor); by coach (sand)
Indoor League Location: The Linc
Sand League Location: Binder Sports Complex
Early Bird Registration: March 18 - April 12
Regular Registration: April 13 - 26
Play Begins: June 10

Volunteer coaches are needed. Contact Anthony at aweeks@jeffersoncitymo.gov for details.

Fall '24 Grade	Night	Matches	Activity #	Early	Reg
3-4 indoor	Wed	6	601073-00	\$50	\$60
5-6 indoor	Thurs	6	601075-00	\$50	\$60
7-9 indoor	Tues	6	601077-00	\$50	\$60
6-7 sand	Fri	6	by coach	\$50	\$60
8-9 sand	Fri	6	by coach	\$50	\$60





General Day Camp Information

- All camps are offered in one-week sessions.
- Camper information must be submitted through ePACT before attending camps. Instructions will be emailed after registering for any of our day camps.
- Camper's lunch/drink should be packed in a small cooler since refrigeration is not available.
- See page 4 for refund policy.
- Most camp registrations include daily public session swim/daily ice skating fee, field trips, and presenters.
- Program registrations received after the designated deadline date are not guaranteed placement in camp. Fees will increase for those allowed to register after the deadline if space is available.

Camper Pre-Registration Fee

This \$17 one-time fee covers the camper's t-shirt and ePACT medical form. The camper pre-registration fee is required before registering for camps.

Pre-registration will be open until March 6. Pre-registrations received after March 6 are not guaranteed registration access by March 11.

Camper Pre-Registration Activity #: 605370-05

This fee includes all day camps between November 1, 2023 until October 31, 2024.

Camper Registration

Online Registration Only: March 11-31, 2024
 Returning Camper Registration: March 11-14, 2024
 Open Registration: March 14 - camp deadline.

Need assistance paying for camp?

Option 1: (FSD) JC Parks Youth Day Camps has a contract with the State of Missouri Subsidy program to provide state childcare assistance to eligible families. All families must pay a portion of the camp fees based on the sliding scale determined by the Department of Social Services (DSS) Family Support Division (FSD).

Option 2: (Camp scholarship) Please stop by the Linc, 1299 Lafayette Street, or visit us online at JCParks.com to learn about our JC Parks Foundation Scholarship opportunities.

Option 3: (Deferred payment plan) A minimum of \$25 is due at the time of camp registration. Full balance is due by the last day of each month before camp starts.

Please contact Angie Toebben with questions, atoebben@jeffersoncitymo.gov; (573) 634-6491

Camp Pool and Ice Arena Visits

Campers will visit parks, pools, and the Washington Park Ice Arena during their week of camp activities. View the chart below for scheduled camp pool and ice arena visits.

Camp	Pool day	Pool location	Ice Skating
Aqua Adventure	Every day	Memorial	N/A
Camp Frost	N/A	N/A	Every day
Out N' About	M,T,W, F	Ellis-Porter	Thursday
Green Berry	Wednesdays	Ellis-Porter	Friday
Binder	M,W,Th,F	Memorial	Tuesday
Wokka Wokka	M,T,Th,F	Ellis-Porter	Wednesday
Camp Oakley	M,T,W,F	Ellis-Porter	N/A

Clear bags are required for campers when visiting the pools.
 View page 33 for the clear bag and pool policies.



Spring Break Day Camps

Theme: Wonders of the World

Join us for an exciting spring break camp crafted for kids in grades K-6. From arts and crafts to interactive games and physical activities, this week will foster fun-filled days. Please pack your child's lunch and drink in a small cooler and ensure transportation to and from The Linc/McClung. Camp hours are 8:00 am - 5:00 pm. Campers will go ice skating at Washington Park Ice Arena or to Community Park daily.

Location: The Linc/McClung Park
Morning Drop-off: 7:15 am @ McClung Park
Evening Pick-up: 5:30 pm
Registration deadline: March 11

Grades	Dates	Activity #	Fee	Late
K-6	Mar 25-29	605388-11	\$120	\$130
K-6	Mar 25-29	605388-11-2	\$120	\$130
K-6	March 28	605388-11	\$24	\$29
K-6	March 29	605388-12.1	\$24	\$29
K-6	April 1	605388-12.2	\$24	\$29
K-6	April 2	605388-12.3	\$24	\$29

Counselor in Training (CIT)

This program is designed to provide leadership opportunities that prepare teens to become staff members at camp, as well as productive members of their community.

The CIT program includes training in all aspects of a counselor's job at camp, participation in service projects, training sessions on such topics as basic child development and behavior management, counseling techniques and best practices, communication and leadership, environmental stewardship, and community service.

Training is scheduled May 21-24. Along with the initial training, CITs will be scheduled to work two to six weeks of JC Parks day camps.

Entry into the program is competitive and is based upon the completed application, references, and an interview with the camp director. Anyone not selected for the program will receive a full refund. Interviews will be held in early April.

CIT Registration Checklist

1. Register and pay for the CIT program
2. Complete the online CIT application form
3. *New CITs - email reference letters/emails to Angie Toeppen at atoebben@jeffersoncitymo.gov

Fall '24 Grade	Activity #	Fee	Registration
7 - 11	605380-01	\$240	Feb 1 - March 15



Binder Adventure Camp Level 1

Theme: Countries Around the World

Binder Adventure Camp Level 1 is an immersive outdoor experience. Campers will not only enjoy nature but will acquire lifelong outdoor skills. Activities will include canoeing, fishing, ropes course, hiking, archery, and more.

Location: Binder Park Pavilion
Morning Drop-off: 7:15 am @ The Linc
 7:30 am @ Memorial Park
 8:30 am @ Binder Park Pavilion
Evening Pick-up: 5:30 pm**



Binder Adventure Camp Level 2

Theme: Countries Around the World

Experience the next level of adventure with Binder Adventure Camp Level 2 - an outdoor recreation program tailored for seasoned explorers. Campers will master outdoor skills appropriate to their ages.

Location: Binder Park Pavilion
Morning Drop-off: 7:15 am @ The Linc
 7:30 am @ Memorial Park
 8:30 am @ Binder Park Pavilion
Evening Pick-up: 5:30 pm**

Be A Camp Counselor

At JC Parks Summer Camps, we're dedicated to delivering top-notch experiences for our campers, and it's our exceptional camp counselors who make that possible. If you're passionate about creating unforgettable memories for kids at camp, join us in crafting remarkable experiences!

Want to be a part of providing awesome memories for camp kids? Apply at jeffersoncitymo.gov



Camp Wokka Wokka

Theme: Children Around the World

Camp Wokka Wokka boasts a diverse range of activities. Activities span from arts and crafts, storybooks, interactive games, hikes, physical activities, field trips, and more. *All campers must be at least 5 years of age and fully potty trained.*

Location: McClung Park
Morning Drop-off: 7:15 am
Evening Pick-up: 5:30 pm**

Camp Frost

Theme: Ice Around the World

Escape the summer heat with Camp Frost. Camp will offer an exciting mix of activities both on and off the ice to keep kids engaged and moving. Camp includes after-camp skate every afternoon. Campers will have a partial ice skating lesson to learn the basic of ice skating and safety on the ice.

Location: Washington Park Ice Arena
Morning Drop-off: 7:15 am
Evening Pick-up: 5:30 pm**

Please note: This camp goes outside and participates in regular camp activities that are not in the ice arena.

CAMP ICE AGE will be offered during week 9 and held at The Linc as the Washington Park Ice Arena is unavailable.

Aqua Adventure Camp

Theme: Seas of the World

This camp will be packed full of water activities such as water safety, slide races, water relays, water polo, diving competitions, and more! Camp activities out of the water will take place as well. Be sure to pack your sunscreen and be ready for a water-filled week of fun.

Add swim lessons during camp: campers can attend 9:00 am swim lessons to coordinate with their camp enrollment.

Camp weeks 3 and 4: swim lesson #603331-(level)A
 Camp weeks 6 and 7: swim lesson #603332-(level)A
 Camp weeks 8 and 9: swim lesson #603333-(level)A

Location: Memorial Park Pavilion and Pool
Morning Drop-off: 7:15 am @ The Linc
 7:30 am @ Memorial Park
Evening Pick-up: 5:30pm** @ Memorial Park



Camp Green Berry

Theme: Animals Around the World

Discover a unique nature education program at Camp Green Berry. Youth will enjoy a range of games and activities while also learning to understand and appreciate the natural environment. Our program emphasizes conservation, nature ethics, and hands on natural crafts. Additionally, there will be daily swimming sessions at the Moreau River 1:30-3:30pm and a weekly field trip. Wednesday pick-up will be at Ellis-Porter Riverside Pool.

Location: Green Berry Acres
Morning Drop-off: 7:15 am
Evening Pick-up: 5:30 pm**



Camp Out N About

Theme: Theme Parks Around the World

Campers will have the opportunity to play a variety of recreational games and sports. This is not a skills camp. Each week, the camp will take a field trip “out and about” in the community.

Add swim lessons during camp: campers can attend 9:00 am swim lessons to coordinate with their camp enrollment.

Camp weeks 3 and 4: swim lesson #603321-(level)A
 Camp weeks 6 and 7: swim lesson #603322-(level)A
 Camp weeks 8 and 9: swim lesson #603323-(level)A

Location: Ellis-Porter Riverside Park
Morning Drop-off: 7:15 am
Evening Pick-up: 5:30 pm**

Camp Global

This camp will be packed full of crafts, games, and activities from a variety of animated movies including Moano, Encanto, and Coco!

All campers must be at least 5 years of age and fully potty trained.

Location: McClung Indoor Pavilion (K-2)
 The Linc (3-6)
Morning Drop-off: 7:15 am
Evening Pick-up: 5:30 pm**

Little Picassos

This visual art camp includes painting, drawing, cartooning, clay, and other mediums taught by local professional artists and art teachers. Campers will have outside play each day and potential swimming.

Students should wear clothes that art materials will not harm. Art supplies are included in the fee. 4th -7th grade. Limited space available.

Location: Green Berry Acres
Morning Drop-off: 8:00 am
Camp Time: 9:00 am - 4:00 pm
Evening Pick-up: 5:00 pm

Camp Oakley

Theme: Famous Rivers of the World

This new camp is for children entering grades 2-6 in fall of 2024. Campers will play a variety of games, explore the river bank (no swimming), bicycling, and much more.

Campers will go to Memorial Park Family Aquatic Center or Ellis-Porter Pool in the afternoons.

Location: North Jefferson (K-2)
 North Jefferson (3-6)
Morning Drop-off: 7:15 am
Evening Pick-up: 5:30 pm**



****Evening pick-up locations vary since campers may attend afternoon swim, ice skating sessions, Community Park, or Cooper Park. An email will be sent the week prior to camp start date with details including pick-up locations for each day.**

May/June Camp Schedule

Week	Camp	Theme	Grade Fall '24	Dates	Activity #	Fee	Late	Deadline
0	CIT Training		7-11	May 21-24	605380-01	\$240	\$240	March 15
	Camp Global	Moana	K-2	May 28-31	605376-001	\$100	\$110	May 14
	Camp Global	Mulan	3-6	May 28 - 31	605376-002	\$100	\$110	May 14
1	Camp Wokka Wokka	Children of Russia	K-2	June 3-7	605372-01	\$123	\$133	May 20
	Camp Green Berry	Animals of Brazil	1-4	June 3-7	605375-01	\$123	\$133	May 20
	Camp Out N About	Busch Gardens	1-3	June 3-7	605371-011	\$123	\$133	May 20
	Camp Out N About	Universal Islands of Adventure	4-6	June 3-7	605371-012	\$123	\$133	May 20
	Binder Adventure 1	Italy	3-5	June 3-7	605373-011	\$125	\$135	May 20
	Binder Adventure 2	Greece	6-8	June 3-7	605373-012	\$123	\$133	May 20
	Aqua Adventure Camp	Persian Gulf	2-4	June 3-7	605389-011	\$125	\$135	May 20
	Aqua Adventure Camp	East China Sea	5-7	June 3-7	605389-012	\$125	\$135	May 20
	Camp Frost	Ice Caps	2-7	June 3-7	605386-01	\$125	\$135	May 20
2	Camp Wokka Wokka	Children of the Pacific Islands	K-2	June 10-14	605372-02	\$123	\$133	May 28
	Camp Green Berry	Animals of Canada	1-4	June 10-14	605375-02	\$123	\$133	May 28
	Camp Out N About	Universal Studios - Japan	2-4	June 10-14	605371-021	\$123	\$133	May 28
	Camp Out N About	Tokyo Disney Sea - Japan	5-7	June 10-14	605371-022	\$123	\$133	May 28
	Binder Adventure 1	Zimbabwe	3-5	June 10-14	605373-021	\$125	\$135	May 28
	Binder Adventure 2	South Africa	6-8	June 10-14	605373-022	\$125	\$135	May 28
	Aqua Adventure Camp	Indian Ocean	2-4	June 10-14	605389-021	\$125	\$135	May 28
	Aqua Adventure Camp	Atlantic Ocean	5-7	June 10-14	605389-022	\$125	\$135	May 28
	Camp Frost	Ice Streams	1-6	June 10-14	605386-02	\$125	\$135	May 28
3	Camp Wokka Wokka	Children of Canada	K-2	June 17-21	605372-03	\$123	\$133	June 3
	Camp Green Berry	Animals of Finland	1-4	June 17-21	605375-03	\$123	\$133	June 3
	Camp Out N About*	Everland Theme Park	1-3	June 17-21	605371-031	\$123	\$133	June 3
	Camp Out N About*	Shanghai Disneyland	4-6	June 17-21	605371-032	\$123	\$133	June 3
	Binder Adventure 1	Spain	3-5	June 17-21	605373-031	\$125	\$135	June 3
	Binder Adventure 2	France	6-8	June 17-21	605373-032	\$125	\$135	June 3
	Aqua Adventure Camp*	Bering Sea	2-4	June 17-21	605389-031	\$125	\$135	June 3
	Aqua Adventure Camp*	Aegean Sea	5-7	June 17-21	605389-032	\$125	\$135	June 3
	Camp Frost	Ice Sheets	2-7	June 17-21	605386-03	\$125	\$135	June 3
4	Camp Wokka Wokka	Children of Asia	K-2	June 24-28	605372-04	\$123	\$133	June 10
	Camp Green Berry	Animals of India	1-4	June 24-28	605375-04	\$123	\$133	June 10
	Camp Out N About*	Tivoli Gardens - Denmark	1-3	June 24-28	605371-041	\$123	\$133	June 10
	Camp Out N About*	Efteling - Netherlands	4-6	June 24-28	605371-042	\$123	\$133	June 10
	Binder Adventure 1	Norway	3-5	June 24-28	605373-041	\$125	\$135	June 10
	Binder Adventure 2	Sweden	6-8	June 24-28	605373-042	\$125	\$135	June 10
	Aqua Adventure Camp*	Pacific Ocean	2-4	June 24-28	605389-041	\$125	\$135	June 10
	Aqua Adventure Camp*	Artic Ocean	5-7	June 24-28	605389-042	\$125	\$135	June 10
	Camp Frost	Snowball Earth	2-7	June 24-28	605386-04	\$125	\$135	June 10



If your child is attending summer school and needs camp options when school is not in session, contact Angie Toeppen at atoebben@jeffersoncitymo.gov for more information

July Camp Schedule

Week	Camp	Theme	Grade Fall '24	Dates	Activity #	Fee	Late	Deadline
5	Little Picassos	Countries in Epcot	4-7	July 1-3	605383-05	\$92	\$102	June 17
	Camp Oakley	Murray River	2-6	July 1-3	605374-05	\$75	\$85	June 17
	Camp Global	Raya & the Last Dragon	K-2	July 1-3	605376-51	\$75	\$85	June 17
	Camp Global	Elemental	3-6	July 1-3	605376-52	\$75	\$85	June 17
6	Camp Wokka Wokka	Children of Europe	K-2	July 8-12	605372-06	\$123	\$133	June 24
	Camp Green Berry	Animals of Pakistan	1-4	July 8-12	605375-06	\$123	\$133	June 24
	Camp Out N About*	Sea World	2-4	July 8-12	605371-061	\$123	\$133	June 24
	Camp Out N About*	Disney World	5-7	July 8-12	605371-062	\$123	\$133	June 24
	Binder Adventure 1	New Zealand	3-5	July 8-12	605373-061	\$125	\$135	June 24
	Binder Adventure 2	Australia	6-8	July 8-12	605373-062	\$125	\$135	June 24
	Aqua Adventure Camp	Mediterranean Sea	2-4	July 8-12	605389-061	\$125	\$135	June 24
	Aqua Adventure Camp	Caribbean Sea	5-7	July 8-12	605389-062	\$125	\$135	June 24
Camp Oakley	Thames River	2-6	July 8-12	605374-06	\$123	\$133	June 24	
7	Camp Wokka Wokka	Children of South America	K-2	July 15-19	605372-07	\$123	\$133	July 1
	Camp Green Berry	Animals of South Africa	1-4	July 15-19	605375-07	\$123	\$133	July 1
	Camp Out N About*	Alton Towers Resort - England	2-4	July 15-19	605371-071	\$123	\$133	July 1
	Camp Out N About*	Europa Park - Germany	5-7	July 15-19	605371-072	\$123	\$133	July 1
	Binder Adventure 1	China	3-5	July 15-19	605373-071	\$125	\$135	July 1
	Binder Adventure 2	Japan	6-8	July 15-19	605373-072	\$125	\$135	July 1
	Aqua Adventure Camp*	Coral Sea	2-4	July 15-19	605389-071	\$125	\$135	July 1
	Aqua Adventure Camp*	Black Sea	5-7	July 15-19	605389-072	\$125	\$135	July 1
	Camp Frost	Glaciers	1-6	July 15-19	605386-07	\$125	\$135	July 1
	Camp Oakley	Nile River	2-6	July 15-19	605374-07	\$123	\$133	July 1
8	Camp Wokka Wokka	Children of Africa	K-2	July 22-26	605372-08	\$123	\$133	July 8
	Camp Green Berry	Animals of the Bahamas	1-4	July 22-26	605375-08	\$123	\$133	July 8
	Camp Out N About*	Asterix Park - France	1-3	July 22-26	605371-081	\$123	\$133	July 8
	Camp Out N About*	Port Aventura Park	4-6	July 22-26	605371-082	\$123	\$133	July 8
	Binder Adventure 1	Brazil	3-5	July 22-26	605373-081	\$125	\$135	July 8
	Binder Adventure 2	Argentina	6-8	July 22-26	605373-082	\$125	\$135	July 8
	Aqua Adventure Camp*	Red Sea	2-4	July 22-26	605389-081	\$125	\$135	July 8
	Aqua Adventure Camp*	Arabian Sea	5-7	July 22-26	605389-082	\$125	\$135	July 8
	Camp Frost	Icebergs	2-7	July 22-26	605386-08	\$125	\$135	July 8
	Camp Oakley	Danube River	2-6	July 22-26	605374-08	\$123	\$133	July 8

August Camp Schedule

Week	Camp	Theme	Grade Fall '24	Dates	Activity #	Fee	Late	Deadline
9	Camp Wokka Wokka	Children of Australia	K-2	July 29 - Aug 2	605372-09	\$123	\$133	July 15
	Camp Green Berry	Animals of Costa Rica	1-4	July 29 - Aug 2	605375-09	\$123	\$133	July 15
	Camp Out N About*	Universal Studios - Hollywood	1-3	July 29 - Aug 2	605371-091	\$123	\$133	July 15
	Camp Out N About*	Ferrari World	4-6	July 29 - Aug 2	605371-092	\$123	\$133	July 15
	Binder Adventure 1	Mexico	3-5	July 29 - Aug 2	605373-091	\$125	\$135	July 15
	Binder Adventure 2	Canada	6-8	July 29 - Aug 2	605373-092	\$125	\$135	July 15
	Aqua Adventure Camp*	Caspian Sea	2-4	July 29 - Aug 2	605389-091	\$125	\$135	July 15
	Aqua Adventure Camp*	Baltic Sea	5-7	July 29 - Aug 2	605389-092	\$125	\$135	July 15
	Camp Oakley	Ganges River	5-7	July 29 - Aug 2	605374-09	\$123	\$133	July 15
	Camp Ice Age	Ice Age	1-6	July 29 - Aug 2	605386-09	\$125	\$135	July 15
10	Camp Global	Luca	K-2	Aug 5-9	605376-101	\$123	\$133	July 22
	Camp Global	CoCo	3-6	Aug 5-9	605376-102	\$123	\$133	July 22
	Little Picassos	Countries in Epcot	4-7	Aug 5-9	605383-10	\$153	\$163	July 22
	Camp Oakley	Amazon River	2-6	Aug 5-9	605374-10	\$123	\$133	July 22
11	Camp Global	Encanto	K-4	Aug 12-16	605376-11	\$123	\$133	July 29

*Coordinating swim lessons are available for this week of camp. See camp description for details.

Ellis-Porter Riverside Pool

320 Ellis-Porter Drive
Jefferson City, MO 65101
(573) 634-6585

Operating Hours

Open May 25 - September 2, 2024
Visit JCParks.com for public session times.

Pool Features: Drop down slide; climbing wall; diving board; ADA compliant pool lift
Shallow Area: Zero-depth entry; rooster tail; flower shower; dumping buckets; froggy slide

Scan the QR code to view the Ellis-Porter Riverside Pool Calendar



Memorial Park Family Aquatic Center

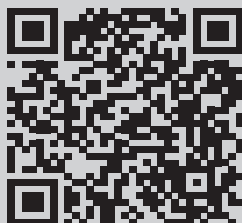
120 Binder Drive
Jefferson City, MO 65109
(573) 634-6588

Operating Hours

Open May 25 - August 11, 2024
Visit JCParks.com for public session times.

Pool Features: Open flume slides (2); Drop down slides (2); lily pad walk; climbing wall; zero depth entry; lap lanes; ADA compliant pool lift; birth-7 year aquatic play structure; hippo slide

Scan the QR code to view the Memorial Park Family Aquatic Center Calendar



General Fees

General fees apply to both Memorial Park Family Aquatic Center and Ellis-Porter Riverside Pool.

Refunds will not be given on season pass purchases. Season passes are not allowed to be shared.

No rain passes will be given in case of inclement weather.

Adult/Senior Admission (18+)	\$8
Adult Admission (after 5:00pm)	\$7
Adult Season Pass	\$115
Youth Admission (children under 12 months free)	\$7
Youth Admission (after 5:00pm)	\$6
Youth Season Pass	\$100
Family Season Pass (up to 4 family members)*	\$250
Senior Pass (60+)	\$100
Lap Swim	\$2
Coin Lockers	\$0.25

*Add \$30 for each additional member; family must live in same household.



Learn to Swim Like a Mermaid

Swimmers will learn how to safely use their mermaid tails. Learn fluke splashes, core rolls, and some synchronized swimming moves. For ages 7+. Must be able to independently swim in shallow area with arms only.

A mermaid fin is required for the class. Minimum class size is 6. You may either provide your own fin, rent a fin, or purchase a fin through us.

Location: Ellis-Porter Riverside Pool
Registration: March 13 - May 26

Dates	Time	Activity #	Fee
June 10 - 13	10:00 - 11:00 am	603325-1A	own fin \$60 rent fin \$95 buy fin \$150
June 10 - 13	5:30 - 6:30 pm	603325-1B	

Rentals

Book your summer party at JC Parks pools! Office outing, team bonding, birthdays, and more! Please call to reserve your rentals. Glass and alcohol are prohibited.

Party Pad Rentals

Want to create your own party? We provide the space, tables, and chairs; the rest is up to you. Public session fees apply since admission to facility is not included with party pad rentals.

Location	Days & Times	Rental Fee
Ellis-Porter Riverside	Mon-Thu 12:00 - 5:00 pm Fri-Sun: 12:00 - 7:00 pm	\$25/hour
MPFAC	Sun-Sat: 12:00 - 7:00 pm	\$25/hour

Private Rentals

Host a private pool party after public session hours.

Food and drink may be brought into the facility for rentals. All attendees must pay admission, including those not swimming. See page 31 for lesson dates.

Location	Days & Times	Rental Fee
Ellis-Porter Riverside	Sun-Sat: 7:30 - 9:00 pm*	\$275 + \$1 per person
MPFAC	Sun-Sat: 7:30 - 9:00 pm	\$275 + \$1 per person

**Weeknight rentals available when swim lessons are not held.*

Birthday Parties

Celebrate your special day at JC Parks pools!

Each party includes:

- All day admission
- 2 hours in party pad area
- Pizza and ice cream for all participants

You may bring your own cake if you would like. Please bring cutting and serving utensils and plates.

Days	Times	Fee
Ellis-Porter	10 Participants	\$175
	15 Participants	\$225
MPFAC	10 Participants	\$175
	15 Participants	\$225

Pre-School Rentals

Licensed child cares, pre-schools, or home day care centers can reserve a one-hour block of time at MPFAC play structure or Ellis-Porter Riverside Pool zero-depth entry area.

Reservations must be made in advance.

Days	Times	Fee
Mon - Fri	9:00 - 10:00 am	\$2 per person



Little Splashers Playtime

Enjoy the water during a time reserved for the little ones. For ages six and under with an adult 15 years or older.

Location	Days & Times	Fee
Ellis-Porter Riverside	Mon-Sat: 10:30 - 11:30am	\$2 per person
MPFAC	Mon-Fri: 10:30 - 11:30am	\$2 per person



Group Swim Lesson Levels

Group lessons are offered for all ability levels, making it as convenient as possible for families with children of all ages. All instructors are certified through an instructor course. Eight lessons are scheduled per session.

Parent and Child

Ages 6 months - 2 years

Class length: 30 minutes; Depth: 4.5 feet

Children will develop a comfort level in and around the water. It will provide the parent with the necessary knowledge and skills to orient the child to the water and safely supervise water activities. One adult must accompany the child in the water.

Preschool

Ages 3 - 4 years

Class length: 30 minutes; Depth: varies

Children gain greater independence in their skills and develop more comfort in and around the water. Swimmers will put their faces under water.

Learn-to-Swim

Ages 5 + years

Class length: 45 minutes; Depth: varies

Level 1: Introduction to Water Skills is for a first-time swimmer. Enter and exit water safely. Practice putting face in water and blowing bubbles through mouth and nose. Front and back glide, back float. Explore arm and hand movements.

Level 2: Fundamental Aquatic Skills Fully submerge and hold breath. Float on front and back. Roll over from front to back, back to front. Glide on front and back. Tread water. Combine arm and leg actions on back and front.

Level 3: Stroke Development Enter water by jumping from side. Rotary breathing. Change from vertical to horizontal position on front and back. Front crawl and elementary back stroke. Flutter, dolphin and scissors kick. Head first entries from sitting/kneeling.

Level 4: Stroke Improvement Swim underwater. Front and back crawl. Elementary back stroke. Breaststroke, sidestroke, and butterfly. Front crawl and backstroke open turns. feet first surface dive and survival swimming.

Level 5: Stroke Refinement Front and back crawl. Elementary backstroke. Breaststroke, sidestroke, and butterfly. Tuck and pike surface dives. Front flip and backstroke flip turn. Rescue breathing. Shallow angle dive. Safety topics and more.

Level 6: Swimming and Skill Proficiency Fitness swimmer. Personal water safety and fundamentals of diving.

Level 7: Competitive Swimming *Pre-requisite: must be able to swim 25 yards of freestyle and backstroke.* Freestyle, backstroke, breaststroke, butterfly, turns, and endurance swimming. Class is dependent on instructor availability.

MPFAC Morning Lessons

Session 1: June 17 - 27
Lesson Days: Monday - Thursday
Registration: March 13 - June 6

Class	Time	Activity #	Fee	Late
Parent & Child	9:00 am	603381-2A	\$37	\$45
	9:40 am	603381-2B	\$37	\$45
	10:20 am	603381-2C	\$37	\$45
	11:00 am	603381-2D	\$37	\$45
Preschool	9:00 am	603311-2A	\$40	\$50
	9:40 am	603311-2B	\$40	\$50
	10:20 am	603311-2C	\$40	\$50
	11:00 am	603311-2D	\$40	\$50
LTS level 1-6	9:00 am	603331-*A	\$45	\$55
	9:55 am	603331-*B	\$45	\$55
	10:50 am	603331-*C	\$45	\$55

**Use LTS skill level in your activity code when registering.*

Session 2: July 8 - 18
Lesson Days: Monday - Thursday
Registration: March 8 - June 27

Class	Time	Activity #	Fee	Late
Parent & Child	9:00 am	603382-2A	\$37	\$47
	9:40 am	603382-2B	\$37	\$47
	10:20 am	603382-2C	\$37	\$47
	11:00 am	603382-2D	\$37	\$47
Preschool	9:00 am	603312-2A	\$40	\$50
	9:40 am	603312-2B	\$40	\$50
	10:20 am	603312-2C	\$40	\$50
	11:00 am	603312-2D	\$40	\$50
LTS level 1-6	9:00 am	603332-*A	\$45	\$55
	9:55 am	603332-*B	\$45	\$55
	10:50 am	603332-*C	\$45	\$55

**Use LTS skill level in your activity code when registering.*

Session 3: July 22 - Aug 1
Lesson Days: Monday - Thursday
Registration: March 8 - July 11

Class	Time	Activity #	Fee	Late
Parent & Child	9:00 am	603383-2A	\$37	\$47
	9:40 am	603383-2B	\$37	\$47
	10:20 am	603383-2C	\$37	\$47
	11:00 am	603383-2D	\$37	\$47
Preschool	9:00 am	603313-2A	\$40	\$50
	9:40 am	603313-2B	\$40	\$50
	10:20 am	603313-2C	\$40	\$50
	11:00 am	603313-2D	\$40	\$50
LTS level 1-6	9:00 am	603333-*A	\$45	\$55
	9:55 am	603333-*B	\$45	\$55
	10:50 am	603333-*C	\$45	\$55

**Use LTS skill level in your activity code when registering.*

Ellis-Porter Morning Lessons

Session 1: June 17 - 27, Monday - Thursday
Registration: March 8 - June 6

Class	Time	Activity #	Fee	Late
Parent & Child	10:20 am	603281-1A	\$37	\$47
	11:00 am	603281-1B	\$37	\$47
Preschool	9:00 am	603301-2A	\$40	\$50
	9:40 am	603301-2B	\$40	\$50
	10:20 am	603301-2C	\$40	\$50
	11:00 am	603301-2D	\$40	\$50
LTS level 1-7	9:00 am	603321-*A	\$45	\$55
LTS level 1-6	9:55 am	603321-*B	\$45	\$55
LTS level 1-6	10:50 am	603321-*C	\$45	\$55

Session 2: July 8 - 18, Monday - Thursday
Registration: March 8 - June 27

Class	Time	Activity #	Fee	Late
Parent & Child	10:20 am	603282-1A	\$37	\$47
	11:00 am	603282-1B	\$37	\$47
Preschool	9:00 am	603302-2A	\$40	\$50
	9:40 am	603302-2B	\$40	\$50
	10:20 am	603302-2C	\$40	\$50
	11:00 am	603302-2D	\$40	\$50
LTS level 1-6	9:00 am	603322-*A	\$45	\$55
	9:55 am	603322-*B	\$45	\$55
	10:50 am	603322-*C	\$45	\$55

Session 3: July 22 - Aug 1, Monday - Thursday
Registration: March 8 - July 11

Class	Time	Activity #	Fee	Late
Parent & Child	10:20 am	603283-1A	\$37	\$47
	11:00 am	603283-1B	\$37	\$47
Preschool	9:00 am	603303-2A	\$40	\$50
	9:40 am	603303-2B	\$40	\$50
	10:20 am	603303-2C	\$40	\$50
	11:00 am	603303-2D	\$40	\$50
LTS level 1-6	9:00 am	603323-*A	\$45	\$55
	9:55 am	603323-*B	\$45	\$55
	10:50 am	603323-*C	\$45	\$55

Saturday Session: June 8 - July 27
Registration: March 8 - May 28

Class	Time	Activity #	Fee	Late
Parent & Child	9:00 am	603284-1A	\$37	\$47
	9:45 am	603284-2A	\$37	\$47
Preschool	9:00 am	603304-1A	\$37	\$47
	9:45 am	603304-2A	\$37	\$47

Ellis-Porter Evening Lessons

Session 1: June 17 - 27, Monday - Thursday
Registration: March 8 - June 6

Class	Time	Activity #	Fee	Late
Parent & Child	5:40 pm	603281-1C	\$37	\$47
	6:20 pm	603281-1D	\$37	\$47
	7:00 pm	603281-1E	\$37	\$47
Preschool	5:00 pm	603301-2E	\$40	\$50
	5:40 pm	603301-2F	\$40	\$50
	6:20 pm	603301-2G	\$40	\$50
	7:00 pm	603301-2H	\$40	\$50
	7:40 pm	603301-2I	\$40	\$50
LTS level 1-6	5:30 pm	603321-*D	\$45	\$55
	6:30 pm	603321-*E	\$45	\$55
	7:30 pm	603321-*F	\$45	\$55

Session 2: July 8 - 18, Monday - Thursday
Registration: March 8 - June 27

Class	Time	Activity #	Fee	Late
Parent & Child	5:40 pm	603282-1C	\$37	\$47
	6:20 pm	603282-1D	\$37	\$47
	7:00 pm	603282-1E	\$37	\$47
Preschool	5:00 pm	603302-2E	\$40	\$50
	5:40 pm	603302-2F	\$40	\$50
	6:20 pm	603302-2G	\$40	\$50
	7:00 pm	603302-2H	\$40	\$50
	7:40 pm	603302-2I	\$40	\$50
LTS level 1-6	5:30 pm	603322-*D	\$45	\$55
LTS level 1-6	6:30 pm	603322-*E	\$45	\$55
LTS level 1-7	7:30 pm	603322-*F	\$45	\$55

Session 3: July 22 - Aug 1, Monday - Thursday
Registration: March 8 - July 11

Class	Time	Activity #	Fee	Late
Parent & Child	5:40 pm	603283-1C	\$37	\$47
	6:20 pm	603283-1D	\$37	\$47
	7:00 pm	603283-1E	\$37	\$47
Preschool	5:00 pm	603303-2E	\$40	\$50
	5:40 pm	603303-2F	\$40	\$50
	6:20 pm	603303-2G	\$40	\$50
	7:00 pm	603303-2H	\$40	\$50
	7:40 pm	603303-2I	\$40	\$50
LTS level 1-6	5:30 pm	603323-*D	\$45	\$55
	6:30 pm	603323-*E	\$45	\$55
	7:30 pm	603323-*F	\$45	\$55

*Use LTS skill level in your activity code when registering.

StarGuard Lifeguard Training

JC Parks aquatic staff is trained with StarGuard lifeguard training program, which provides necessary license to work at JC Parks aquatic facilities.

Participants learn to anticipate, recognize, and manage accidents/incidents in a professional manner while protecting themselves. Training includes performing rescues and emergency care. Course includes first aid, CPR, oxygen administration, and AED administration. Classroom portion will be held at The Linc.

New Guard classes require completion of an online course prior to class start date. Participants will be notified when course materials are available for pick-up.

Returning Guards must have proof of current certification.

In-Water Training is required in addition to classroom time. Sign up for your preferred in-water training date when you attend classroom training.

Class	Classroom	Activity #	Staff	Non	Late	Deadline
New	April 27-28	603351-01	\$125	\$200	\$225	April 13
New	May 4-5	603351-02	\$125	\$200	\$225	April 27
New	May 18-19	603351-03	\$125	\$200	\$225	May 1
Return	May 11	603352-01	\$95	\$165	\$185	May 4
Return	May 19	603352-02	\$95	\$165	\$185	May 11
Return	May 24	603352-03	\$95	\$165	\$185	May 17

Dates subject to change depending on class size.



Junior Lifeguard Training

Available for ages 11-14. Daily sessions consist of physical training, demonstrations, team building, and leadership training.

Instruction includes water safety, public relations, facility operations, basic work skills, first aid, and CPR.

Students receive StarGuard Junior Lifeguard certification, t-shirt, and graduation ceremony held on **June 9 at 5:30-7:00 pm**.

Graduates may volunteer at JC Parks pools. They will receive free admission on their volunteer days.

Participants must attend all five days-no exceptions.

Location: Ellis-Porter Riverside Pool
Registration: March 13 - May 19

Dates	Time	Activity #	Fee	Late
June 3 - 7	9:00 - 11:30 am	603361-01	\$60	\$75
June 3 - 7	5:30 - 8:00 pm	603361-02	\$60	\$75

Private Swim Lessons

Swimmers of all levels may register for private lessons. A JC Parks instructor will help you improve your skills with one-on-one supervision. JC Parks staff will be the only individuals allowed to teach private lessons.

Registration for private lessons is on a first-come, first-served basis. Participants receive four, half-hour lessons. **Private lessons begin after June 16.**

Pool	Fee
Ellis-Porter Riverside or MPFAC	\$80

Adult Swimming Lessons

Class A: Fear of Water (not comfortable putting face in water; going past waist deep; or floating on back)

Class B: Moderate Experience (semi-comfortable in water; putting face/head in water; and going deeper than waist deep)

Location: Ellis-Porter Riverside Pool
Lesson Days: Monday - Thursday
Time: 5:45 - 6:30 pm
Registration: March 8 - June 5

Class	Dates	Activity #	Fee	Late	Deadline
A	June 10 - 13	603320-1A	\$50	\$60	June 5
B	June 10 - 13	603320-1B	\$50	\$60	June 5
A	July 1 - 3	603320-2A	\$50	\$60	June 24
B	July 1-3	603320-2B	\$50	\$60	June 24

General

- Pools are open daily except during threatening weather.
- Certified lifeguards are on duty at all times for your safety.
- During periods of low attendance, various attractions and/or pools within the complex may close.
- During periods of extreme heat, staff will take 10 minute safety breaks throughout day to clear pool.
- JC Parks is not responsible for lost or stolen items. Coin operated lockers are available and recommended at each facility.
- Complimentary lifejackets are available at the admission booth.
- Diaper changing stations are available in the restrooms.
- It is the patron's responsibility to read and obey all posted signs for safety.

Facility Rules

- Profane language is not allowed. Patrons using inappropriate language will be asked to exit the facility for the day **without a refund**.
- All patrons must pay to enter whether swimming or observing.
- Pool patrons are not allowed to leave and re-enter the pools. Exceptions made for adults with manager's approval.
- Patrons wearing street clothes will not be allowed admission into facility unless as a guardian of a child 10 years or younger.
- Appropriate swim attire must be worn, including male swim trunks, female one or two piece suits and tankinis. Suits should not be see through. No thongs, pants, jean shorts or shorts with belt loops or rivets, inappropriate language, and anything else deemed not appropriate by pool staff.
- Children 12 years and under **MUST** be accompanied and supervised by a person 15 years of age or older.
- Outside food, drink, coolers or glass containers are not allowed into the pools.
- JC Parks reserves the right to check baggage if necessary.
- Persons must be able to swim on their own to use waterslides.
- Paging patrons is not permitted.
- No smoking/vaping in the pool complex or parking lot.
- Any person suspected to be under the influence of alcohol or drugs will not be permitted into the facility.
- Water wings/small inner tubes are permitted if parent/guardian is within reach of the child. **NO Rafts/large inner tubes.** Noodles are allowed into the facility.
- Footballs/basketballs are not allowed.
- Close fitting swim diapers are required for those not potty trained. Swim diapers are available for purchase.
- If you, your child, or anyone in your family has had diarrhea in the past two weeks, please do not use the pool.
- Lifeguards and managers have final authority.

Visit JCParks.com
for a complete pool policy listing.

Clear Bag Policy

JC Parks has a clear bag policy at Memorial Park Family Aquatic Center and Ellis-Porter Riverside Pool **during public session hours**.

This policy supports our priority to create a fun and safe environment for our pool guests and staff.

Each patron may bring one clear bag of any size. Mesh bags are also acceptable.

In addition to a clear/mesh bag, patrons may bring in a small clutch that does not exceed 4.5" x 6.5".

Clear Bag FAQs

Q. Will I be able to purchase a clear bag at the pool?

A. Both pools will have reusable clear totes available for purchase at the admission gates. Visit JCParks.com for purchase fees and options.

Q. What do I do if I have medical equipment?

A. Pool staff will be on-hand to assist guests who have medically necessary items, including breastfeeding supplies. Refrigeration is available if needed.

Q. What about beach towels?

A. We ask that guests remove towels from their bags and carry towels over their shoulders or arms when entering the facility.

Q. Are diaper bags allowed?

A. No. Any supplies needed are required to be in a clear bag. Each member of a family, including children, will be allowed to bring an approved clear bag and a clutch purse into the pool.

Non-Approved Bags

- Back Pack
- Camera Case
- Cinch Bag
- Fanny Pack
- Oversized Tote Bag
- Diaper Bag
- Purse



Operating Schedule

Washington Park Ice Arena

711 Kansas St.
Jefferson City, MO 65109
(573) 634-6580

Operating Hours (Open Year Round)

Visit jcparks.com/facility/washington-park-ice-arena/ for monthly calendars. Public sessions are typically scheduled daily at various time slots.

Public session is open skating for the public.
Drop-in is a hockey scrimmage.
Stick & Puck is a hockey practice session.
Freestyle is a figure skating practice session.

General Fees

Adult Admission	\$6
Adult 10 Session Pass	\$54
Youth Admission	\$5
Youth 10 Session Pass	\$45
Skate Rental (Figure & Hockey) all ages	\$3
Matinee (M-F before 3:00pm)	\$3.50
Matinee 10 Session Pass	\$31.50
Freestyle (1 hour)	\$8
Freestyle (> 1.5 hours)	\$12
Freestyle 10 Session Pass	\$96
Drop-In/Stick & Puck (1 hour)	\$8
Drop-In/Stick & Puck (> 1.5 hours)	\$12
Stick & Puck 10 Session Pass (no charge for goalies)	\$72
Drop-In Hockey 10 Session Pass	\$96
Speed Skating (1 hour)	\$8
Speed Skating (10 session pass)	\$72
Skate Sharpening (Figure & Hockey)	\$8
Blade Sharpening	\$10
Coin Lockers	\$0.25



Ice Arena Rentals

School Rentals

The ice arena is available during the day for your school group! Pre-school and school groups might want to consider the arena for private parties, physical education classes or field trips. Maximum time of 2 hours.

Public Session Discount Group Rate

Discounted group rates are available during public sessions. Groups of 20 or more can receive 50¢ off admission fee and skate rental. Reservations must be made at least one week in advance.

Multi-Purpose Room Rental

The multi-purpose room rents for \$30 an hour. This includes set-up and clean-up time.

Private Rentals

Private rentals are available at times when no programs are scheduled. Maximum rental length is two hours. Rental skates are \$3, Youth groups must have one adult supervisor per ten children.

Time	Fee per hour	Skate Rental
Prime Time (6am - 10pm)	\$250	\$3
Non-Prime Time (10pm - 6am)	\$220	\$3

Birthday Parties

Celebrate their special day at Washington Park Ice Arena!

Each party includes:

- Admission to the public session for 10 skaters.
- Skate rental for 10 skaters.
- Coupons for a small soda and snack from concessions (choose from a hotdog & chips, nachos & cheese, pretzel sticks & cheese, or Bosco sticks).
- Use of rink-side table for duration of public session

\$130 for up to 10 participants. Additional participants can pay regular fees for the items listed above on the day of the party.

You may bring your own cake if you would like. Please bring cutting and serving utensils and plates.

Want to create your own party? Rent the multipurpose room for \$30/hour and bring your own food and drink (regular admission and skate rental would apply for those skating).

Call the manager at (573) 634-6580 for information and availability. For schedule of public sessions, visit us at jcparks.com/facility/ice-arena-rental/.



Ice Show Participation

Group Numbers: All levels will be represented. Groups will have to purchase a costume and props up to \$80.

Practices: Tuesdays, Feb 27 - April 2

Homeschool practices & ice dance: Thursdays, Feb 29 - April 4

Technical Rehearsal: April 9 from 5:30 - 9:15pm

Dress Rehearsal: April 11 from 5:00 - 9:00pm

62nd Annual Ice Show: Friday, April 12 at 7:00pm

Saturday, April 13 at 7:00pm

Sunday, April 14 at 2:00pm

Summer Skating Lessons

Skating lessons are available for Snowballs - Platinum 3. Lessons are held on Tuesdays and Thursdays.

Session 1: May 14 - 30

Session 2: June 11 - 27

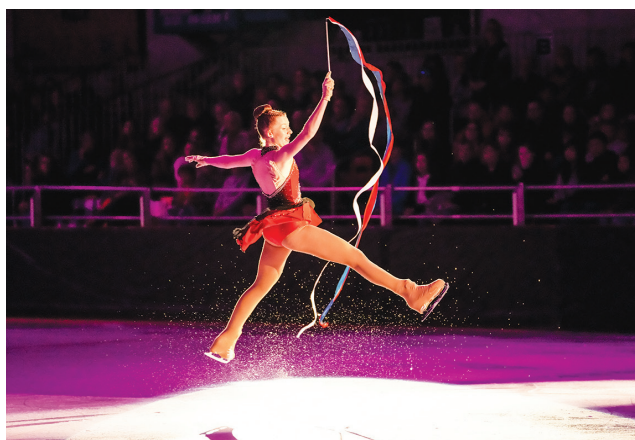
Session 3: July 9 - 25

Session 4: August 6 - 22

A semester is all 4 sessions and is \$260. MIF/FS Semester = \$300

Class	Time	Activity #	Reg	Drop-In
Snowballs 1-4	5:45 - 6:15pm	904490	\$70	\$15
Skating Skills 1	5:45 - 6:15pm	904491	\$70	\$15
Skating Skills 2	5:45 - 6:15pm	904492	\$70	\$15
Skating Skills 3	5:45 - 6:15pm	904493	\$70	\$15
Skating Skills 4	5:45 - 6:15pm	904494	\$70	\$15
Skating Skills 5	5:45 - 6:15pm	904495	\$70	\$15
M.I.F & Freestyle	6:15 - 7:15pm	904371	\$80	\$15

Scan the QR code to view the Washington Park Ice Arena Calendar



Private Lessons

Skaters interested in taking private skating lessons may contact Carly Potts, Ice Skating Director, at cpotts@jeffersoncitymo.gov or (573) 634-6480.

Students receiving private instruction must pay admission to the public or freestyle session, as well as pay the instructor for the private lesson.

In order for a coach to teach private lessons, they must have a current contract on file with proof of certification, background check, and Safe Sport Training. Coaches without a current contract on file will not be allowed to teach private lessons at Washington Park Ice Arena.

Adult Hockey League

The adult hockey league is a co-ed, recreational, no-checking hockey league for ages 18+. Games will consist of three 15-minute periods. Full equipment is required. All skill levels welcome.

League rules available online. USA Hockey insurance is required. Visit usahockey.com for more information.

Contact Chad Brown at cbrown@jeffersoncitymo.gov or (573) 634-6547 for details.

Summer League: Sundays, June 2 - July 28
Games: 8 games, No games July 7
Regular Registration: April 15 - May 15
Late Registration: May 16 - 30

Fall League: Sundays, Sept 8 - Nov 17
Games: 11 games
Regular Registration: July 21 - August 21
Late Registration: August 22 - September 5

Leagues	Position	Activity #	Reg	Late
Summer League	Player	904263-5A	\$141	\$161
	Goalie	904263-5B	\$81	\$97
Fall League	Player	904263-4A	\$197	\$219
	Goalie	904263-4B	\$109	\$131

Stick and Puck/Drop-in Hockey

Stick and Puck is a time for hockey enthusiasts to practice hockey skills in an informal setting. Scrimmage games are not allowed during stick and puck. Open to all ages unless stated otherwise. Players are required to provide and wear protective equipment. Rough/dangerous play will not be tolerated.

Drop-in hockey is for informal pick-up games. Players will divide into teams and scrimmage. Full equipment required. This is a no-check program, and rough/dangerous play will not be tolerated. Drop-in is divided into youth and adult levels.

- Adult Drop-in is for ages 18+ only
- Youth Drop-in is for ages 17 and under only
- Bring a light and dark jersey for drop-in

Times vary. Check online monthly calendar.

Cost: \$8 for 1 hour; \$12 for 2 hours
 No charge for goalies

Youth Learn-To-Play Hockey

Class length is 45 minutes of on-ice practice. Instructors will teach basic hockey and skating fundamentals.

Full hockey equipment required; full equipment rental is available from the Mid-Mo Tigers youth hockey club for a \$150 deposit due at fitting; \$100 is refunded when the equipment is returned at end of the session.

Available to ages 5 - 12.

Basic skating skills are required prior to registration. Players will be separated into skill groups to help prepare athletes for competitive play.

Wednesdays, 5:45 - 6:45pm

Gear sizing is the Monday before session start date.

Session 1: March 20 - May 1
Session 2: May 8 - June 12
Session 3: June 19 - July 31
Session 4: August 14 - September 18

Check jcparks.com for registration deadline.

Session	Time	Activity #	Early	Reg
1	5:45-6:45pm	904262-1G	\$80	\$90
2	5:45-6:45pm	904262-2G	\$80	\$90
3	5:45-6:45pm	904262-3G	\$80	\$90
4	5:45-6:45pm	904262-4G	\$80	\$90



Hockey Skating and Skills Camp

Open to goalies and skaters, this youth hockey camp is open to ages 6 - 17. Participants will be divided into appropriate age groups. Full equipment is required.

Participants will work on skating, stick handling, shooting, passing, offensive awareness, defensive skills, body contact, and office training and games.

Regular Registration: June 17 - July 7
Late Registration: July 8 - 22

Dates	Time	Activity #	Fee	Late
July 29 - Aug 2	8:30am - 4:00pm	904269	\$350	\$375

Try Hockey for Free

Those interested in hockey have the opportunity to get on the ice and play the game - AT NO COST!

Participants need to wear socks, athletic shorts and a comfortable shirt. Please bring a bicycle helmet. All other hockey equipment will be provided to borrow for FREE.

Date	Day	Age	Time
August 3	Saturday	5 - 12 years	11:45am - 12:45pm
Oct 12	Saturday	5 - 12 years	11:45am - 12:45pm
Dec 14	Saturday	5 - 12 years	11:45am - 12:45pm



Youth Hockey House League

Games will be played 3 vs. 3 or 4 vs. 4 with 15 minute periods. This is a no-check league. Full equipment required. Goalies play free. Jersey is available for \$25, if needed.

Session 1: Mondays, March 25 - April 29
No games April 8
Regular Registration: February 11 - 25
Late Registration: February 26 - March 18

Session 2: Mondays, May 6 - June 10
No games May 27
Regular Registration: March 31 - April 14
Late Registration: April 15 - 29

Mites: 5:45 - 6:45pm
Squirts: 7:00 - 8:00pm
Peewee/Bantam: 8:15 - 9:15pm

Mid-Missouri Tigers Youth Hockey

Mid-Missouri Tigers Hockey Club is a competitive youth traveling hockey club. Registration opens in June with the season running from mid-August to mid-March.

To register or get more information, please visit their website at midmotigers.com.

Follow along on Facebook at Mid-Missouri Tigers Hockey.

Additional fees/equipment costs may apply. Fee amounts are posted at midmotigers.com. Travel is expected in order to participate. Payment plans are available.

Scan the QR code for the Mid-Missouri Tigers Youth Hockey website.



Speed Skating

Walk-on practice sessions Sundays 6:30 - 7:30 pm and Wednesdays 4:30-5:30pm. Times may vary. Check calendar online for current schedule.

For speed skaters only. Helmet required.
Drop-In fee: \$8 per session or 10 session punch card for \$72.

Visit jcsc.org for information.

Public parks are open year-round, 5:00am to 11:00pm.

Neighborhood parks are also open all year, 5:00am to sunset.

Host Your Event at a Park

JC Parks has many facilities and pavilions to host your events in 2024.

Outdoor Rentals Include:

Binder Park Lake Deck
Binder Park Pavilion
Green Berry Acres Pavilion
McClung Park Pavilion
Memorial Park Pavilion
Quigg Commons

Indoor Rentals include:

Cedar City Room
Green Berry Acres Cabin
Ice Arena Multi-Purpose Room
McClung Indoor Pavilion
The LINC (Meeting rooms and court space)

There are also rental options for ball fields, Ellis-Porter Riverside Pool, Memorial Park Family Aquatic Center, Washington Park Ice Arena, and Oak Hills Golf Course.

For a full list of rentals, visit jcparks.com/#rentals or scan the QR code:



Rent-a-Garden

You don't have to be a master gardener to snag a plot at North Jefferson Recreation Area!

North Jefferson Recreation Area is home to the Rent-A-Garden program. Plant your own produce or fill your plot with pretty flowers. No matter what you want grow, our affordable plots make finding the space a little easier.

Full Lot (25' x 50'): \$55 per Season
Half Lot (25' x 25'): \$35 per Season

To learn more or request a reservation, contact us at (573) 634-6482



Launch Your Boat

Binder Lake Boat Ramp: Binder Lake boat ramp sports a "rougher" texture that eliminates slipping on the moss during the summer. The ramp is at a greater pitch which makes loading and unloading much easier.

Missouri River Access: The river has always been right in our backyard. Now it is easily accessible! Wilson's Serenity Point at Carl R. Noren Missouri River Access, located in North Jefferson Recreation Area, is open from 5:00am to 11:00pm.

Hough Park Lake: boating (hand-launched) and bank fishing are permitted at Hough Park Lake. Access to the golf course irrigation lake is at the end of Iven Road. For personal safety, fishing and boating are not allowed near hole #3 on the north end of lake.

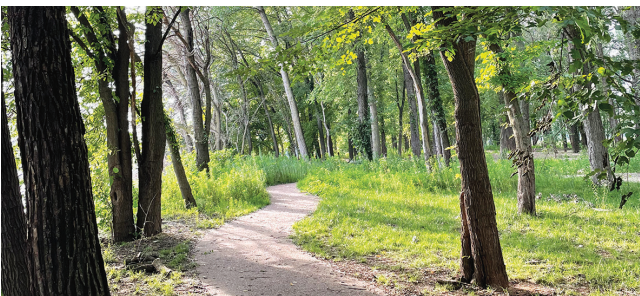
McKay Park Lake: In addition to bank fishing, hand-launched boating is now permitted at McKay Park Lake. Bring your favorite non-motorized water vessel during park hours of 5:00am to 11:00pm. All vehicles and trailers must remain in designated parking lots and roadways as they are not permitted on trails or grass areas.

Binder Park	5840 Rainbow Dr 645 acres 5:00 am - 11:00 pm	
North Jefferson Recreation Area	927 Fourth St 205.6 acres 5:00 am - 11:00 pm	
Deborah Cooper Park	130 W Capitol Ave. 30 acres 5:00 am - 11:00 pm	
Ellis-Porter Riverside Park	300 Ellis-Porter Dr 62.4 acres 5:00 am - 11:00 pm	
McClung Park	930 McClung Park Dr 22.2 acres 5:00 am - 11:00 pm	
McKay Park	1700 Southridge Dr 20.5 acres 5:00 am - 11:00 pm	
Memorial Park	111 Memorial Park Rd 29.9 acres 5:00 am - 11:00 pm	
Washington Park	1200 Washington Park Dr 57.2 acres 5:00 am - 11:00 pm	
Frog Hollow Nature Area	2975 W Edgewood Dr 26.5 acres 5:00 am - sunset	
Hough Park <i>Oak Hills Golf Center</i>	932 Ellis Blvd 169.1 acres clubhouse hours	
Joseph Miller Park	5521 Rainbow Dr 64.5 acres 5:00 am - 11:00 pm	
Aurora Park	541 Aurora Ave 7 acres 5:00 am - sunset	
Community Park	725 Marshall St 3.5 acres 5:00 am - 11:00 pm	
East Miller Park	916 E Miller St 2.5 acres 5:00 am - sunset	
Green Berry Acres	1915 Green Berry Rd 5 acres 5:00 am - 9:00 pm	
Hickory Adams Park	503 Hickory St 1 acre 5:00 am - sunset	
Park Place	1112 Park Ave 0.7 acres 5:00 am - sunset	
Rolling Hills Park	2347 Lexington Dr 2.5 acres 5:00 am - sunset	
Rotary Centennial Park	102 Bolivar St 0.1 acres 5:00 am - 11:00 pm	

- Restrooms
- Picnic Tables
- Picnic Shelter
- Trail
- Play-ground
- RV Camping
- Tent Camping
- Boat Launch
- Fishing
- Amphitheater
- Dog Park
- Ball Field
- Sand Court
- Horseshoe Pit
- Ball Court
- Pool
- Tennis Court
- Golf Course
- Ice Arena
- Skate Park
- Disc Golf
- RC Flying Field
- Splash Pad
- Gardens
- Bike Trail

Trail Distances

Trail	Miles
Greenway Trail (Main Corridor)	
Dunklin Street Trail Head to Southwest Blvd.	1.1
Southwest Blvd. to Stadium Blvd.	1.3
Stadium Blvd. to West Edgewood Dr. Parking Lot	0.9
West Edgewood Dr. Parking Lot to Fairgrounds Rd.	2.1
Fairgrounds Rd. thru County Park to Covington Gardens	1.3
Greenway Trail (Spurs)	
Duensing Ballfield to Swifts Highway	0.7
Stadium Blvd. to Satinwood Dr.	0.5
Creektrail Dr. to W. Edgewood parking lot	0.9
Frog Hollow to Mission Dr.	0.47
W. Edgewood Dr. to Shermans Hollow	0.5
Riverside Park to Lewis & Clark State Office Bldg.	0.7
Lewis & Clark Trailhead Plaza to Clay St. Trailhead Plaza	0.6
Clay Street Trailhead Plaza to North Jefferson Shelter	1.7
North Jefferson Shelter to Katy Trail	1.0
Katy Trail to Summit Drive	0.2
McKay Park to Southwest Blvd.	0.16
Twin Hills Rd. to Cherry Creek Ct.	0.23
Country Club Drive to Binder Park	1.17
Greenway Trail (East Branch of Wears Creek)	
East McCarty St. to Chestnut St.	1.2
Stadium/Lafayette round-about through Aurora Park	1.1
Park / Fitness Trails	
Deborah Cooper Park on Adrian's Island	0.27
East Miller Street Neighborhood Park	0.25
Ellis-Porter Riverside Park	1.3
McKay Park	0.6
Memorial Park	1.3
Mountain Bike / Hiking Trails	
Binder Park	15
Frog Hollow Nature Trail (adjacent to W. Edgewood Greenway)	3.1
On-Street Bike Lanes	
Country Club Dr. (Hobbs Ln. to Hwy. 179)	0.98
W. Main St. (Hwy. 179 to Clay St.)	2.67
W. Main St. (Clay St. to Broadway St.)	0.45
Bolivar St. (W. Main St. to Dunklin St. at Broadway St.)	0.79
Mulberry St. to W. Miller St. to E McCarty St.	1.04
E. Capitol Ave. (Jefferson St. to Chestnut St.)	0.75
E. Capitol Ave. at Cherry St. to High St. to E McCarty St.	1.04
E. McCarty St. at Grant St. to Eastland Dr.	0.57
Eastland Dr. at E. McCarty St. to Bald Hill Rd.	1.45
Seven Hills Rd. at Bald Hill Rd. to Green Berry Rd.	0.88



Dog Park

Fee: \$48/Annual Usage Permit

Located in North Jefferson Recreation Area, this 2-acre dog park offers a fenced, off leash area for dogs to stretch their legs and exercise.

Includes a double gate entrance, water source, waste disposal stations, posted regulations and use guidelines, and park benches throughout the site.

Permits can be purchased at The Linc, 1299 Lafayette St.

Amphitheater

Located in Ellis-Porter Riverside Park, the MU Health Care Capital Region Amphitheater will have many shows in the 2024 season.

Visit www.crmuamphitheater.com for announcements, news, and updates.



Hawthorn Bank Box Office

A permanent box office is located in Riverside Manor at Ellis-Porter Riverside Park. Hawthorn Bank provides a benefit to concert goers to save on service charges by purchasing your tickets in person at the box office!

Address: 1505 Riverside Drive
 Phone: (573) 634-6527
 Email: JeffersonCityInfo@VenuWorks.com
 Hours: Tuesday - Friday, 11:00am-5:00pm
 2 hours before gates open on show days

Visit CRMUamphitheater.com to sign up for the newsletter to be the first to know about upcoming shows!

Community Bike Rides

Community bike rides are free and open to anyone looking for a group of laid-back cyclists to ride with. Our League Cycling Instructors help the groups ride through the different routes.

These rides occur bi-monthly from March to November and are geared towards newer or non-competitive cyclists.

Locations and start times vary. The monthly ride schedule is posted at jcparks.com/program/community-bike-ride/. Contact Kevin at kschwartz@jeffersoncitymo.gov for more information.



Girls Mountain Bike Sessions

Girls in middle school and high school can learn or improve their mountain bike skills at free sessions taught by instructors who are certified through the National Interscholastic Cycling Association (NICA). Girls who have been mountain bike racing in the Missouri NICA league will also help lead the sessions. Participants need to bring a bike and a helmet.

Location: Binder Park Lake Deck
Dates: Sundays, April 28 and May 5
 1:00 - 3:00pm



Ropes Course Group Rentals

Located at Binder Park, the ropes challenge course offers a variety of elements for all ages. The course consists of high and low courses, giving participants a variety of challenges to work across. Our ropes course leaders and instructors will follow a "challenge by choice" philosophy. While you control the complexity of your experience, the course will challenge you to step out of your comfort zone and into unique situations. Trained program leaders and instructors will be by your side through each course segment in order to ensure your enjoyment, comfort and above all else, safety.

Location: Binder Park
Registration: Reserve at least 10 days in advance
Age: 10 years + equipment must fit

To book a reservation, contact Kevin at kschwartz@jeffersoncitymo.gov.

Course	Duration	Group Size	Fee per hour
Low	1-3 hours	10-30	\$100.00
High	1-3 hours	10-30	\$100.00
Combo	1-3 hours	10-30	\$100.00



Introduction to Rock Climbing

Experience outdoor rock climbing with JC Parks. Join us for an immersive opportunity to learn the basics of outdoor rock climbing. Our certified staff will guide participants through the basics of climbing and provide the knowledge and equipment to make you confident on your next adventure.

Book an adventurous birthday party, corporate retreat, or family outing to explore new heights with JC Parks!

Ages: 10 years + equipment must fit.
 Contact Kevin at kschwartz@jeffersoncitymo.gov to register.

Disc Golf

JC Parks and Jefferson City Disc Golf Club provide two 18-hole, championship level disc golf courses.

The original course is located in Joseph C. Miller Park (adjacent to the Binder Sports Complex).

The second course is located on the north end of Binder Park (across from Binder Lake Deck).

Find details about how to join the club, league, and event information at [Facebook.com/JeffersonCityDiscGolfClub](https://www.facebook.com/JeffersonCityDiscGolfClub) or email jcdiscgolf@gmail.com.

All Dam Day

Saturday, June 15, 2024

Jefferson City Open

Saturday- Sunday, August 31- Sep 1, 2024

Visit discgolfszene.com for more information on tournaments in Jefferson City.



Intro to Sailing

Capital City Sailing Association welcomes sailors of all ages and experience levels. During the summer, CCSA hosts club sailing opportunities at Binder Lake on most Wednesday evenings. Informal races are held twice a month.

Lessons: introductory 3-session series to acquaint individuals with the basics of small sailboat handling. Participants should be able to swim and should bring a life jacket, non-skid boat or water shoes, drinking water, a hat and sunscreen.

For more info, contact Leszek Vincent, CCSA Commodore, at leszekv@gmail.com or JC Parks at (573) 634-6482.

Location: Binder Park Lake
Dates: Saturdays, July 6, 13, 20
Registration: March 1 - June 23, 2024

Age	Time	Activity #	Early Bird	Reg
5-12 years	9am - 12pm	907401-2A	\$40	\$45
13-17 years	9am - 12pm	907401-2B	\$40	\$45
18+ years	9am - 12pm	907401-1A	\$40	\$45



RV Camping

Fee: \$30/Day (all sites full hook-up)

The campground has 17 RV campsites with full water, sewer, wifi, and electrical hookups. Check-in is 2:00pm; check-out is 1:00 pm.

They also feature barbecue grills, covered picnic tables, campfire rings, and a laundry and shower house.

Reservations can be made up to a year in advance. Contact bindercamper@gmail.com or (573) 536-9470 to reach the campground host.

Each site is sewer/electric accessible. Water access is located at approximately every other site. Campers need to bring their own attachment and hose. Grey Water dumping station is \$10.00.



JC PARKS

1299 Lafayette St., Jefferson City, MO 65101

(573) 634-6482 • jcparks@jeffersoncitymo.gov • JCParks.com



Jefferson City's only 18-hole public golf course, Book a tee time, schedule a tournament, or join a league!

- 18 Holes
- Clubhouse and Bar
- Golf Carts
- Driving Range
- Practice Area
- Golf Lessons
- Open League
- Ladies League



932 Ellis Boulevard

Jefferson City, MO

573-634-6532



Capital Region



Health Care

AMPHITHEATER

*Bringing live music and fun to Jefferson City.
Find 2024 events, announcements,
and more!*

crmuamphitheater.com



JC
PARKS



VenuWorks